

DRAFT Administrative Report

DRAFT 2025 Guidelines for the Early Detection of Prostate Cancer in Australia

18 June 2025

DRAFT for NHMRC Approval

Disclaimer: Prostate Cancer Foundation of Australia develops materials based on best available evidence and takes advice from recognised experts in the field in developing such resource; however, it cannot guarantee and assumes no legal responsibility for the currency or completeness of the information. Accordingly, the Prostate Cancer Foundation of Australia and its employees and agents shall have no liability (including without limitation liability by reason of negligence) to any users of the information contained in this publication for any loss or damage (consequential or otherwise), cost or expense incurred or arising by reason of any person using or relying on the information contained in this publication and whether caused by reason of any error, negligent act, omission or misrepresentation in the information.

Suggested citation: Prostate Cancer Foundation of Australia. 2025 Guidelines for the Early Detection of Prostate Cancer in Australia: Administrative Report – Draft for NHMRC approval. St Leonards, NSW: PCFA; 2025.

Prostate Cancer Foundation of Australia
Level 8, 1 Chandos St, St Leonards NSW 2065
ABN: 31 521 774 656

Published 18 June 2025

© Prostate Cancer Foundation of Australia 2025

This work is copyright. You may reproduce the whole or part of this work in unaltered form for your own personal use or, if you are part of an organisation, for internal use within your organisation, but only if you or your organisation do not use the reproduction for any commercial purpose and retain this copy-right notice and all disclaimer notices as part of that reproduction. Apart from rights to use as permitted by the Copyright Act 1968 or allowed by this copyright notice, all other rights are reserved, and you are not allowed to reproduce the whole or any part of this work in any way (electronic or otherwise) without first being given the specific written permission from Prostate Cancer Foundation of Australia to do so. Requests and inquiries concerning reproduction and rights are to be sent to research@pcfa.org.au.

In the spirit of reconciliation, we would like to acknowledge the Traditional Custodians of Country throughout Australia and their connections to land, sea and community. We pay our respects to their Elders, past and present, and extend that respect to all Aboriginal and Torres Strait Islander Peoples today.

Contents

Introduction	4
1. Consumer involvement in Guideline development	6
1.1. Guideline Review Group	6
1.2. Public Consultation.....	7
1.2.1. Public Consultation 1 – Perceptions of the 2016 Guidelines	7
1.2.2. Public Consultation 2 – Feedback on the DRAFT 2025 Guidelines.....	7
1.3. Representation of Aboriginal and Torres Strait Islander peoples and culturally and linguistically diverse communities.....	8
2. Declaring conflicts of interest	9
3. Method for consensus-based recommendations and practice points	10
4. Funding sources.....	10
5. Public Consultation process	11
5.1. Compliance with Sctn 14 NHMRC Act 1992.	11
5.2. Consultation with government and other authorities.....	11
6. Independent review of guidelines and recommendations.....	13
Appendices	14
Appendix 1: Review group invitations.....	15
Appendix 1.1: Project Steering Committee invitation	15
Appendix 1.2: Expert Advisory Group invitation	21
Appendix 2: Stakeholders approached for Public Consultation.....	25
Appendix 3: Sample meeting agenda	58
Appendix 4: Declaration of Conflicts of Interest.....	59
Appendix 5: Independent review responses.....	95

Introduction

This Administrative Report fulfils the National Health and Medical Research Council (NHMRC) *Procedures and requirements for meeting the NHMRC standards for clinical practice guideline recommendations*¹ for the non-technical information relating to the process of development of the DRAFT 2025 Guidelines for the for the Early Detection of Prostate Cancer in Australia ('DRAFT 2025 Guidelines'), specifically:

A.4 Consumers participate in the guideline development, and the processes employed to recruit, involve and support consumer participants are described.

A.6 Potential competing interests are identified, managed and documented, and a competing interest declaration is completed by each member of the guideline development group.

A.8 The guideline development process includes participation by representatives of Aboriginal and Torres Strait Islander peoples and culturally and linguistically diverse communities (as appropriate to the clinical need and context), and the processes employed to recruit, involve and support these participants are described.

A.2.1 The amount and percentage of total funding received from each funding source is stated.

D.6 The method used to arrive at consensus-based recommendations or practice points is documented.

D.15 The guideline and recommendations have been assessed by at least two reviewers, independent of the guideline development process, using the AGREE II instrument.

F.1 The process for public consultation on the draft guideline complies with Section 14A of the NHMRC Act 1992 (Cwlth) and accompanying regulations.

F.3 During the public consultation period, the developer has undertaken and documented consultation with:

- the Director-General, Chief Executive or Secretary of each state, territory and Commonwealth health department;***
- other relevant government departments as appropriate to the guideline topic;***
- relevant authority/ies, when a guideline makes any recommendation/s specifying interventions that are not available or restricted in Australia.***

F.4 The developer has identified and consulted with key professional organisations (such as specialty colleges) and consumer organisations that will be involved in, or affected by, the implementation of the clinical recommendations of the guideline.

¹ National Health and Medical Research Council. *Procedures and requirements for meeting the NHMRC standards for clinical practice guidelines* (August 2022 version 1.2). Melbourne: National Health and Medical Research Council; 2020.

Terminology

The DRAFT 2025 Guidelines were developed using a rigorous, multi-step, systematic method involving a Guideline Review team which was made up of a Project Steering Committee, two Advisory Groups, an Expert Advisory Panel, 12 Expert Advisory Panel Working Groups and an Executive Committee. When referencing the collective input of the Guideline Review team we have used '**Review**' as a collective term to refer to any and all processes and people involved in development of the DRAFT 2025 Guidelines such as systematic reviews, Working Group discussions or other elements used to generate recommendations.

DRAFT for NHMRC Approval

1. Consumer involvement in Guideline development

1.1. Guideline Review Group

A.4 Consumers participate in the guideline development, and the processes employed to recruit, involve and support consumer participants are described.

The Guideline review was led by the Prostate Cancer Foundation of Australia (PCFA) and comprised a Project Steering Committee, two Advisory Groups, an Expert Advisory Panel, 12 Expert Advisory Panel Working Groups and an Executive Committee. Consumer representatives contributed to the development of guidelines as members of the:

- Project Steering Committee (three members)
- Expert Advisory Panel (nine members)
- Active Surveillance Working Group (one member)
- Multi-parametric MRI Working Group (one member)
- Prostate Specific Antigen testing Working Group (two members)
- Prostate Biopsy Working Group (one member)
- Risk Factors Working Group (one member)
- Decisional Support Working Group (one member)
- Digital Rectal Examination Working Group (one member)
- Watchful Waiting Working Group (one member)
- Population-wide approaches and Harm Minimisation Working Group (one member)
- Socioeconomic Working Group (one member)
- Minimal Clinically Important Differences Working Group (two members)

Refer [DRAFT 2025 Guidelines, Appendix 1: Governance structure and group membership](#) for further details of consumers involved in Guideline review.

Consumers were identified through recommendations by Steering Committee, Expert Advisory Panel, Working Groups, PCFA and consumer networks, and directly contacted to provide information about the review and an opportunity to ask questions about involvement - refer [Appendix 1: Review Group Invitations](#). During the Guideline development process, Working Group convenors supported consumers by contacting them out of session to allow private discussion as necessary. In addition to consumer representation in the Guideline Review Group, consumer input was sought via two Public Consultations as part of the review process as outlined in [Section 1.2 Public Consultation](#) below.

1.2. Public Consultation

1.2.1. Public Consultation 1 – Perceptions of the 2016 Guidelines

In April 2024, the Prostate Cancer Foundation of Australia (PCFA) released a Call for Submissions inviting Australians with an interest in PSA testing for prostate cancer to share their views on the existing NHMRC approved 2016 Clinical Practice Guidelines for Prostate Specific Antigen (PSA) Testing and Early Management of Test-detected Prostate Cancer ('2016 Guidelines'). The objective of this call was to identify perceptions of the 2016 Guidelines in relation to effectiveness, usability, opportunities to strengthen the revised Guidelines in the context of this review, and personal experiences of the Guidelines. The Call for Submissions was open for six weeks from 18 April to 3 June (inclusive), 2024.

The majority of responses received during this consultation process were from consumers (97%), including men diagnosed with prostate cancer, support group leaders or members, partners of men with prostate cancer, and friends of men with prostate cancer. Consumers provided feedback on the clarity, acceptability and implementation gaps in the 2016 guidelines, and suggestions for content, form and dissemination of the forthcoming 2025 Guidelines.

A manuscript of findings is published in the Australia New Zealand Journal of Surgery.² Refer also to [Public Consultation Report, Appendix 1: Public Consultation 1: Public feedback on the 2016 PSA Guidelines](#) for further details.

1.2.2. Public Consultation 2 – Feedback on the DRAFT 2025 Guidelines

From 14 April to 25 May (inclusive), 2025, the PCFA released a second Call for Submissions inviting Australians with an interest in prostate cancer to review and provide feedback on the DRAFT 2025 Guidelines. The aim of this public consultation was to provide stakeholders including consumers, clinicians and other end-users to review the content, quality, legitimacy and acceptability of the DRAFT 2025 Guidelines. The Public Consultation aimed to elicit a wide range of views from end-users, identify any content requiring revision, review language for clarity and readability, and ensure that guidelines are feasible and acceptable to end-users.

Refer [Public Consultation Report](#) for details of findings.

The Public Consultation Report will be published on the PCFA website following Guideline approval.

² Heneka N, Heathcote P, Malouf P, Chambers SK, Smith D, Dunn J. Lessons from the implementation of the Australian 2016 Prostate Specific Antigen Testing Clinical Practice Guidelines: A descriptive study. ANZ Journal of Surgery. 2025; ePub ahead of print. 4 April 2025. DOI:10.1111/ans.70136

1.3. Representation of Aboriginal and Torres Strait Islander peoples and culturally and linguistically diverse communities

A.8 The guideline development process includes participation by representatives of Aboriginal and Torres Strait Islander peoples and culturally and linguistically diverse communities (as appropriate to the clinical need and context), and the processes employed to recruit, involve and support these participants are described.

The Guideline Review Group included: i) representatives for Aboriginal and Torres Strait Islander populations and Men of African Descent on the Expert Advisory Panel, and dedicated Expert Advisory Panel Working Groups for Aboriginal and Torres Strait Islander populations and Men of African Descent; ii) a First Nations Representative and Indigenous Peoples Health Adviser and three Consumer Representatives on the Project Steering Committee; iii) nine consumer representatives from culturally and linguistically diverse backgrounds, including Aboriginal and Torres Strait Islander and LGBTIQ+ representatives. Refer [DRAFT 2025 Guidelines, Appendix 1: Governance structure and group membership](#) for further details of Guideline Review Group Membership.

Representatives from culturally and linguistically diverse backgrounds were identified through recommendations by Steering Committee, Expert Advisory Panel, Working Groups, PCFA and consumer networks and directly contacted to provide information about the review and an opportunity to ask questions about involvement - refer [Appendix 1: Review Group Invitations](#). During the Guideline development process, Working Group convenors supported representatives from culturally and linguistically diverse backgrounds by contacting them out of session to allow private discussion as necessary.

In addition to consumer representation in the Guideline Review Group, input from representatives from culturally and linguistically diverse backgrounds was sought via two Public Consultations as part of the review process:

- Public Consultation 1 included dedicated questions exploring experiences, needs, and considerations for marginalised communities, at-risk groups and culturally and linguistically diverse communities. Refer [Public Consultation Report, Appendix 1: Public Consultation 1: Public feedback on the 2016 PSA Guidelines](#).
- Public Consultation 2 also included specific questions about the approach to early detection of prostate cancer for Aboriginal and Torres Strait Islander males, language and inclusivity and general feedback on Section C: Priority populations. Refer [Public Consultation Report, Appendix 3: Public Consultation 2 questions](#).
- In addition to this, Public Consultation 2 specifically targeted peak bodies and organisations that represent priority populations: 37 representing Aboriginal and Torres Strait Islander people, 12 representing culturally and linguistically diverse populations, eight representing LGBTIQ+ communities, and six representing people living in rural and remote areas. Refer [Appendix 2: Stakeholders approached for Public Consultation](#).

2. Declaring conflicts of interest

A.6 Potential competing interests are identified, managed and documented, and a competing interest declaration is completed by each member of the guideline development group.

Conflicts of interest was assessed and managed according to the NHMRC Guideline for Guidelines Handbook.³ All members of the Guideline Review Group were required to submit conflict of interest declarations: i) prior to the first Committee/Panel/Working Group meeting; at any point throughout the guideline review process if interest declarations changed; and prior to reviewing the DRAFT 2025 Guidelines post Public Consultation and before submission to the NHMRC.

The Chair and Committee/Panel/Working Group reviewed each potential conflict of interest to ensure all parties were informed, and could assess the potential conflict according to whether it could be eliminated, could consistently produce bias, or the scope for conflict of interest extended beyond the individual. If groups could not agree if a conflict of interest was present, the matter would be referred to the Executive Committee to make a decision. However, this situation did not arise in the course of the Review.

A convenor was nominated for each Committee/Panel/Working Group who did not have financial interests related to early detection of prostate cancer. Nominated convenors were also free of non-financial interests. Prior to the start of the Guideline review, a decision was made that, in instances where group discussion was related to a convenor's conflict of interest, the convenor would nominate an Acting convenor for that period of discussion, and would not participate in Working Group activities related to the topic; including discussion, development of recommendations, and revision of recommendations. However, based on assessment of ongoing declarations of interest until Guideline submission for approval, no conflicts of interest warranting these management strategies were identified.

It was the responsibility of Committee/Panel/Working Group members to update their conflicts of interest throughout the guideline development process. Members were periodically asked to disclose any new identified or potential conflicts of interest to the Chair and Group for discussion throughout the review. This was a standing agenda item for all working group meetings (refer [Appendix 3: Sample meeting agenda](#)).

Throughout the development process no significant conflicts of interest were identified, hence conflict management strategies were not considered necessary. A summary of conflict of interest declarations is published in [Appendix 4: Declaration of Conflicts of Interest](#).

In reviewing Public Consultation feedback for the DRAFT 2025 Guidelines, Committee/Panel/Working Group members were required to recuse themselves from discussions pertaining to feedback provided by their organisation or collaborative group.

³ National Health & Medical Research Council. Guidelines for Guidelines Handbook. www.nhmrc.gov.au/guidelinesforguidelines. National Health and Medical Research Council.

3. Method for consensus-based recommendations and practice points

D.6 The method used to arrive at consensus-based recommendations or practice points is documented.

Consensus-based recommendations were developed by individual working groups, through a process of in-depth discussion, revision and agreement. Unanimous support for consensus-based recommendations was sought through a process of voting and revision. Consensus-based recommendations were subsequently reviewed and endorsed by the Executive Advisory Panel and Project Steering Committee. Refer [Technical Report](#) for methods and processes used to develop the recommendations.

4. Funding sources

A.2.1 The amount and percentage of total funding received from each funding source is stated.

Development of this guideline by the Prostate Cancer Foundation of Australia was funded by the Department of Health and Aged Care, who contributed \$770,000 (GST inclusive) to support a review of evidence and development of new guidelines for detection and early management of prostate cancer for men in Australia.

The Prostate Cancer Foundation of Australia contributed \$276,716 (GST inclusive) drawn from underspend on the Prostate Cancer Specialist Nursing Program Grant 2020-23. Prostate Cancer Foundation of Australia was responsible for project coordination, administration of working groups, final guideline development and submission to the NHMRC. The Prostate Cancer Foundation of Australia subcontracted the Daffodil Centre to undertake systematic reviews, guide evidence to decision making processes, support Working Groups to develop clinical questions and PICOs, contribute to the [Technical Report](#) and provide medical editor services to assist in drafting and publishing guidelines.

The funding body did not influence the content of these guidelines.

5. Public Consultation process

5.1. Compliance with Sctn 14 NHMRC Act 1992.

F.1 The process for public consultation on the draft guideline complies with Section 14A of the NHMRC Act 1992 (Cwlth) and accompanying regulations

The design and process of Public Consultations was compliant with:

- Section 14.A of the NHMRC Act 1992 (Cwlth) and accompanying regulations
- 2016 NHMRC Standards for Guidelines
- Procedures and requirements for meeting the NHMRC standard
- 'Public Consultation' section of the NHMRC Guideline for Guidelines.

Refer [Public Consultation Report](#) for details of findings.

The Public Consultation Report will be published on the PCFA website following Guideline approval.

5.2. Consultation with government and other authorities

F.3 During the public consultation period, the developer has undertaken and documented consultation with: the Director-General, Chief Executive or Secretary of each state, territory and Commonwealth health department, and other relevant government departments as appropriate to the guideline topic.

F.4 The developer has identified and consulted with key professional organisations (such as specialty colleges) and consumer organisations that will be involved in, or affected by, the implementation of the clinical recommendations of the guideline.

In alignment with NHMRC requirements F3 and F4 for Public Consultation above, a list of stakeholders to contact was prepared (refer [Appendix 2: Stakeholders approached for Public Consultation](#)). Key stakeholders were systematically identified using the relevant domains and constructs of the Consolidated Framework for Implementation Research (CFIR),⁴ the determinant framework used in this review to predict or explain barriers and facilitators to implementation effectiveness and inform the choice of implementation strategies.

The CFIR comprises a series of domains that span multiple implementation settings (outer, inner, individual) and corresponding constructs to help identify key stakeholders in each setting to support effective implementation. Stakeholders were systematically sought from each domain and relevant construct to ensure broad representation of government, professional and consumer organisations throughout Public Consultation. An overview of domain and construct definitions used to categorise stakeholders is provided in Table 2.

⁴ Damschroder LJ, Reardon CM, Widerquist MAO, Lowery J. The updated Consolidated Framework for Implementation Research based on user feedback. *Implementation Science*. 2022;17(1):75.

Administrative Report

Table 2: CFIR domain and construct definitions⁴

Domain/construct	Definition
Outer Setting	The setting in which the 'Inner Setting' exists. The Outer Setting is designed to capture macro-level factors, meso-level factors and microsystem-level factors that impact the inner setting.
Partnerships & Connections	For the purposes of this Guideline review the Outer Setting encompasses the Australian Health System.
Policies & Laws	External entities, including referral networks, academic affiliations, and professional organisation networks that network with the Inner Setting to support and promote implementation of the updated Guidelines
	Legislation, regulations, professional group guidelines and recommendations, or accreditation standards that support implementation and/or delivery of the updated Guidelines.
Inner Setting	The setting in which the updated Guidelines will be implemented. For the purposes of this Guideline review the Inner Setting comprises primary health care settings and specialist urological practice
Individual Setting	Those who are directly or indirectly involved with delivering updated Guidelines or are the recipients of the updated Guidelines.
Innovation Deliverers - Indirect	In addition to those stakeholders listed in the Inner Setting Domain, the indirect innovation deliverers represent supporting health services involved in Guideline implementation, e.g., pathology services.
Innovation Recipients	Those to whom the updated Guidelines apply: Australian men eligible for testing for the early detection of prostate cancer. This includes those considered at-risk groups and priority populations.

Four weeks prior to the Public Consultation period for the DRAFT 2025 Guidelines, all stakeholders listed in [Appendix 2: Stakeholders approached for Public Consultation](#), were contacted advising them of the upcoming Public Consultation. The same stakeholders were again contacted at the start of the Public Consultation period (14 April) inviting feedback on the DRAFT 2025 Guidelines.

Public Consultation Submission Summary

F.2.1 A version of the public consultation submissions summary is publicly available, with submissions de-identified.

Refer [Public Consultation Report](#) for details of findings.

The Public Consultation Report with submissions de-identified will be published on the PCFA website following Guideline approval.

6. Independent review of guidelines and recommendations

D.15 The guideline and recommendations have been assessed by at least 2 reviewers, independent of the guideline development process, using the AGREE II instrument.

The DRAFT 2025 Guidelines and associated documents prepared for Public Consultation were assessed using the AGREE II criteria by two expert reviewers who were not involved in the guideline development during the Public Consultation period (14 April to 25 May 2025).

Reviewers were provided with the DRAFT 2025 Guideline document, Dissemination Plan, Technical Report and Administrative Report, and an electronic version of the AGREE II tool and the User Manual.

Refer [Appendix 5: Independent review responses](#) for details of AGREE II scoring and feedback.

Appendices

Appendix 1: Review group invitations

Appendix 1.1: Project Steering Committee invitation

Appendix 1.2: Expert Advisory Group invitation

Appendix 2: Sample meeting agenda

Appendix 3: Declaration of Conflicts of Interest

Appendix 4: Stakeholders approached for Public Consultation

Appendix 1: Review group invitations

Appendix 1.1: Project Steering Committee invitation



25 March 2024

NAME

[email](#)

PCFA REVIEW OF CLINICAL GUIDELINES FOR PSA TESTING

Invitation to join Independent Expert & Consumer Project Steering Committee

Dear NAME

I write on behalf of Prostate Cancer Foundation of Australia regarding PCFA's review of the Clinical Guidelines for PSA Testing. The review has been commissioned by the Department of Health and will be a multi-year project which commenced in January 2023. The scope of work will include a wide-ranging consultation process and scientific literature review to produce a new Australian model for the guided detection of prostate cancer and management of test-detected disease.

The review will be governed by an Independent Expert and Consumer Project Steering Committee and delivered by an Expert Advisory Panel, bringing together Australia's leaders in this field to design a contemporary and comprehensive set of guidelines, backed by the very latest evidence (refer attached for further information).

We welcome your participation as an invited member of the Project Steering Committee. The Committee will meet regularly throughout the multi-year review period. Should you have any queries, please email PCFA's Research and Governance Executive Ms Hannah Lunnay via email to Hannah.Lunnay@pcfa.org.au.

Ultimately, our aim is to deliver a new set of evidence based Australian Guidelines for the early detection and effective management of prostate cancer.

Best wishes,

A handwritten signature in blue ink, appearing to read "Jeff Dunn", with a stylized flourish at the end.

Professor Jeff Dunn AO

Chair | Guideline Review Project Steering Committee

President | Union for International Cancer Control

Chair Cancer Survivorship | University of Southern Queensland

Chief of Mission and Head of Research | Prostate Cancer Foundation of Australia

Clinical practice guidelines for Prostate Specific Antigen (PSA) Testing and Early Management of Test-detected Prostate Cancer – 2023 guidelines update.

BACKGROUND. The objective of this project is to update the existing 2016 *Clinical practice guidelines for Prostate Specific Antigen (PSA) Testing and Early Management of Test-detected Prostate Cancer* (the Guidelines) which expired in 2021.

The 2016 Guidelines provide evidence review, advice and clinical practice recommendations including PSA testing strategies for asymptomatic men who have made an informed choice to be tested, imaging and biopsy, active surveillance, watchful waiting and sociocultural aspects of PSA testing. Clinical practice points include evidence- and consensus-based recommendations, with the strength of evidence for each graded according to the NHMRC GRADE assessment protocol.

Since 2016, new evidence, standards of care, and technologies have improved the way prostate cancer is diagnosed, treated, and managed. An update to the Guidelines is required to ensure alignment with the latest evidence and best practice care.

The project will be delivered by Prostate Cancer Foundation of Australia under an Agreement with the Commonwealth Department of Health, subcontracting an extensive literature review of newly published and relevant national/international scientific literature.

It is expected the revised Guidelines will follow the National Health and Medical Research Council (NHMRC) Guidelines for Guidelines and seek NHMRC approval. The Guideline proposal and project plan will be registered with the NHMRC before updating commences, and once accepted onto the NHMRC program, follow NHMRC procedures and requirements for Guideline development.

The revised Guidelines will outline recommendations that include but are not limited to:

- Advice for consumers and health professionals about how best to support men in making an informed decision for or against PSA testing, taking into consideration potential benefits and harms.
- Advice about testing strategies to recommend to men who decide in favour of testing, depending on their age, family history and other concerns and potential risk factors for prostate cancer.
- Recommendations about further investigation after a PSA test result.
- The early treatment/management/surveillance of prostate cancer diagnosed following such investigation, ensuring alignment with the Optimal Care Pathway for prostate cancer.

NEED for Review. Prostate cancer is a major cause of mortality and morbidity in Australia. It is the second leading cause of cancer death in Australian men after lung cancer. In the seven years since the current clinical practice guidelines for PSA testing and management of test-detected prostate cancer were published, an estimated 23,670

Australian men have died from prostate cancer. Projections published in *The Lancet Public Health* in 2022 (led by the Daffodil Centre) estimate that 600,329 Australian men will be diagnosed with prostate cancer and 116,385 men will die from prostate cancer between 2020 and 2044.

The evidence to date, as documented in the current (2016) NHMRC-approved guidelines generally recommends that men make informed decisions about PSA testing to indicate prostate cancer risk. Emerging evidence from international and Australian modelling indicates that more structured recommendations may have a greater public health benefit. The 2016 guidelines are in urgent need of an update.

For reference, here is the link to the 2016 Guidelines:

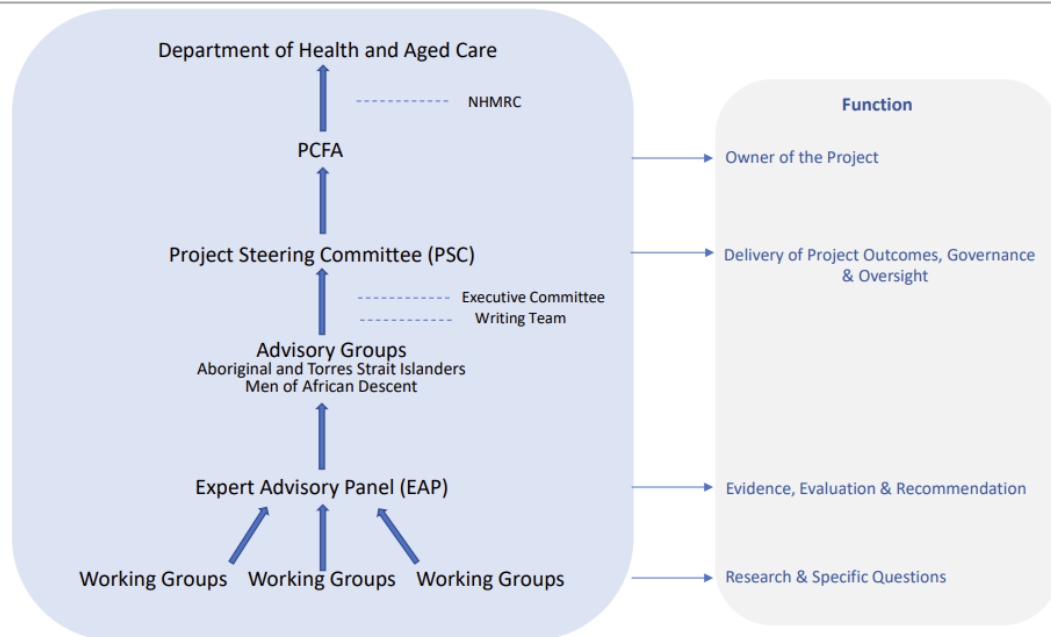
<https://www.pcfa.org.au/awareness/for-healthcare-professionals/clinical-practice-guidelines-on-psa-testing/>

Also for your information is a link to an Editorial published in the March edition of the Australian Journal of General Practice. Timely and topical when it comes to this current review: <https://www1.racgp.org.au/ajgp/2023/march>

Administrative Report

REVIEW OF THE 2016 CLINICAL PRACTICE GUIDELINES FOR PROSTATE SPECIFIC ANTIGEN (PSA) TESTING & EARLY MANAGEMENT OF TEST-DETECTED PROSTATE CANCER.

GOVERNANCE FRAMEWORK



Clinical practice guidelines for Prostate Specific Antigen (PSA) Testing and Early Management of Test-detected Prostate Cancer – 2023 guidelines update.

Project Steering Committee, Terms of Reference

Background

Prostate cancer is the second-leading cause of cancer death in Australian men. In 2013, Prostate Cancer Foundation of Australia (PCFA) and Cancer Council Australia partnered to co-develop Australia's first ever clinical practice guidelines aimed at publishing evidence- and consensus-based recommendations for optimal use of the prostate specific antigen test and clinical management of men who agree to undergo a PSA test. Final guidelines were endorsed by Australia's National Health and Medical Research Council (NHMRC) and published in 2016. In 2022, PCFA executed an agreement with the Australian Department of Health and Aged Care to update the 2016 guidelines and engaged the Daffodil Centre to undertake technical work including evidence review and liaison with the NHMRC.

Role and purpose

The establishment of robust project governance, including independent expert working groups, multidisciplinary and consumer representation, is a requirement of NHMRC guideline approval. The Project Steering Committee will be the lead governing group for the project; its role and purpose is to provide independent executive oversight of the guidelines' development. Specific activities include:

- Establishing the project's scope, based on analysis of 2016 Guidelines, research prioritisation and evidence gradings, and approving preliminary project plan for reporting to the Australian Department of Health and Ageing;
- Reviewing detailed project plan updates as evidence review and critical appraisal are undertaken;
- Reviewing the establishment of project working groups such as expert advisory panels and chapter-specific working parties; and
- Reviewing project reports submitted to the Australian Department of Health and Ageing and interim and final reporting to the NHMRC as required.



Membership

The Project Steering Committee comprises organisational and individual experts and key stakeholders involved in prostate cancer control and/or with professional expertise in the development of cancer clinical practice guidelines. The committee will be co-chaired by Professor Jeff Dunn, Chief of Mission and Head of Research at the Prostate Cancer Foundation of Australia and Professor Peter Heathcote, senior urologist and Chair of PCFA's Medical Advisory Committee.

Meetings

The Project Steering Committee will meet on an ad hoc basis, primarily through videoconferencing, as required to undertake the activities outlined above. The committee will meet face-to-face at least once a year for the project's duration to discuss project developments and for endorsement of final draft guidelines, following public consultation, prior to submission for NHMRC approval. Meetings, either by video or face-to-face, will be convened at the co-chairs' discretion. Representation from all key disciplines (clinician, epidemiology/methods, consumers) is required for a meeting to proceed. Given the high standards of governance and the role of the Project Steering Committee, proxies for standing members will not be permitted. Should any members leave the committee before completion of the project, their replacement will be a matter for the committee, approved by the co-chairs and reported to the Department of Health and Ageing. For optimal efficiency, some project activities, such as input on project documentation, will be undertaken via email at the co-chairs' discretion in response to advice from technical working group/s.

Conflicts of interest

All Project Steering Committee members will be required to submit conflict of interest declarations, consistent with standard Australian Department of Health and Ageing practice for clinical advisory committees and NHMRC guidelines requirements.

Appendix 1.2: Expert Advisory Group invitation



19 February 2024

Name

[email](#)

**PROSTATE CANCER FOUNDATION OF AUSTRALIA REVIEW OF
CLINICAL GUIDELINES FOR PROSTATE SPECIFIC ANTIGEN TESTING**
Invitation to join the Expert Advisory Panel

Dear NAME,

I write on behalf of Professor Jeff Dunn, Chair of the Project Steering Committee (PSC) regarding Prostate Cancer Foundation of Australia's (PCFA) review of the Clinical Guidelines for Prostate-Specific Antigen (PSA) Testing. The review has been commissioned by the Department of Health and is a multi-year project that commenced in January 2023. The scope of work includes a wide-ranging consultation process and scientific literature review to produce a new Australian model for the guided detection of prostate cancer and management of test-detected disease.

The review is governed by an independent expert and consumer PSC and delivered by an independent, multidisciplinary Expert Advisory Panel (EAP) (refer Attachment 1 – PSC and EAP Members), bringing together Australia's leaders in this field to design a contemporary and comprehensive set of guidelines, backed by the very latest evidence (refer Attachment 2 – Background Information).

We would welcome your participation as an invited member of the EAP, in the specific EAP focus area of _____ (refer Attachment 3 - EAP Terms of Reference and Focus Areas). The EAP will meet as required throughout the multi-year review period, with options to join these meetings either in-person or online. If you have any queries at any time, please email PCFA's Research and Governance Executive Ms Hannah Lunnay via email to Hannah.Lunnay@pcfa.org.au.

Ultimately, our aim is to deliver a new set of evidence based Australian Guidelines for the early detection and effective management of prostate cancer.

Best wishes,

A handwritten signature in black ink, appearing to read "P. Heathcote".

Professor Peter Heathcote

Chair | Guideline Review Expert Advisory Committee

Co-Chair | Guideline Review Project Steering Committee

Copy to: Professor Jeff Dunn

Chair - Guideline Review Project Steering Committee

Attachment 3:

Clinical practice guidelines for Prostate Specific Antigen (PSA) Testing and Early Management of Test-detected Prostate Cancer – 2023 guidelines update.

TERMS OF REFERENCE - Expert Advisory Panel

Background

Prostate cancer is the second-leading cause of cancer death in Australian men. In 2013, Prostate Cancer Foundation of Australia (PCFA) and Cancer Council Australia partnered to co-develop Australia's first ever clinical practice guidelines aimed at publishing evidence- and consensus-based recommendations for optimal use of the prostate specific antigen test and clinical management of men who agree to undergo a PSA test. Final guidelines were endorsed by Australia's National Health and Medical Research Council (NHMRC) and published in 2016. In 2022, PCFA executed an agreement with the Australian Department of Health and Aged Care to update the 2016 guidelines and engaged the Daffodil Centre to undertake technical work including evidence review and liaison with the NHMRC.

Project governance

The establishment of robust project governance, including independent expert working groups, multidisciplinary and consumer representation, is a requirement of NHMRC guideline approval. Project governance and reporting to the Australian Government Department of Health and Aged Care and high-level direction on the project's scope and execution will be the responsibility of the Project Steering Committee (see Attachment 1).

The Project Steering Committee (PSC) has appointed an independent, multidisciplinary Expert Advisory Panel (EAP), to advise on technical, scientific, stakeholder engagement and dissemination components of the project, including the specific research and clinical scope and proposed related chapter structure. Following the establishment of scope and chapter structure, the EAP will advise the PSC on chapter-specific working party members (which should include EAP members in advisory roles in consultation with technical experts at the Daffodil Centre tasked with evidence review and critical appraisal).

Role and purpose of the EAP

The EAP will be the lead independent technical advisory body providing independent expert recommendations on the project's scope and translation of evidence review into clinical recommendations. Specific activities include:

April 2023

- Advising the PSC on project scope, based on analysis of 2016 Guidelines, research prioritisation and evidence gradings, in consultation with Daffodil Centre technical team;
- Advising the PSC on the establishment of clinical questions in consultation with Daffodil Centre technical team;
- Advising the PSC on membership of chapter-specific working parties in consultation with Daffodil Centre technical team;
- Advising on clinical recommendations and practice points informed by evidence review and critical appraisal; and
- Advising on final draft guidelines in response to external input, e.g., NHMRC response to interim guidelines project report and feedback from public consultation.

Membership

The EAP comprises experts in key disciplines relating to the detection, diagnosis and management of test-detected prostate cancer, including medical, scientific, patient support and consumer expertise.

The EAP will be chaired by Professor Peter Heathcote, senior urologist and Chair of PCFA's Medical Advisory Committee.

EAP members can also be members of the Project Steering Committee and chapter-specific working parties at the discretion of the EAP Chair and the PSC.

Meetings

The EAP will meet on an ad hoc basis, primarily through videoconferencing, as required to undertake the activities outlined above. (Much of the EAP's activities would be undertaken via email and sharing, editing and discussing joint project documents as appropriate on a shared file system.)

The EAP will meet face-to-face at least twice through the duration of the project, e.g., to discuss guidelines content at pivotal points such as pre-progress report to NHMRC and/or prior to development of final draft guidelines in advance of public consultation.

Meetings will otherwise be convened at the discretion of the chair, when a live group discussion is considered necessary in addition to the exchange of information via email and online document development.

Conflicts of interest

All EAP members will be required to submit conflict of interest declarations, consistent with standard Australian Department of Health and Ageing practice for clinical advisory committees and NHMRC guidelines requirements.

April 2023

2023 UPDATE OF CLINICAL PRACTICE GUIDELINES IN PSA TESTING

Expert Advisory Panel (EAP) – Focus Areas

Pathology	Urology	Epidemiology	Radiation Oncology & Brachytherapy
Medical Oncology	General Practice	Imaging	Communications
Nursing	Psycho-Oncology	Consumer Advocacy	Public Health
	Male Sexual & Reproductive Health	Rehabilitation	

Updated: 11 April 2023

Appendix 2: Stakeholders approached for Public Consultation

CFIR Domain	CFIR Domain Construct	Category	Position	Organisation
Outer Setting	Partnerships & Connections	Government - Federal	Acting Assistant Secretary	Australian Government
Outer Setting	Partnerships & Connections	Government - Federal	Assistant Minister for Health and Aged Care Assistant Minister for Indigenous Health	Australian Government
Outer Setting	Partnerships & Connections	Government - Federal	Assistant Minister Rural and Regional Health Assistant Minister for Mental Health and Suicide Prevention	Australian Government
Outer Setting	Partnerships & Connections	Government - Federal	Chief Medical Officer	Australian Government
Outer Setting	Partnerships & Connections	Government - Federal	Minister for Aged Care Minister for Sport	Australian Government
Outer Setting	Partnerships & Connections	Government - Federal	Minister for Health and Aged Care	Australian Government
Outer Setting	Partnerships & Connections	Government - State	A/Chief Executive - Central Coast Local Health District	NSW Government
Outer Setting	Partnerships & Connections	Government - State	A/Chief Executive, South Western Sydney Local Health District	NSW Government
Outer Setting	Partnerships & Connections	Government - State	A/Manager	Northern Territory Prevocational Medical Assurance Services (NT PMAS)

Administrative Report

CFIR Domain	CFIR Domain Construct	Category	Position	Organisation
Outer Setting	Partnerships & Connections	Government - State	Acting Chief Executive, eHealthNSW	NSW Government
Outer Setting	Partnerships & Connections	Government - State	Acting Chief Executive, Far West Local Health District	NSW Government
Outer Setting	Partnerships & Connections	Government - State	Assistant Director General	Government of WA
Outer Setting	Partnerships & Connections	Government - State	Attorney-General	NT Government
Outer Setting	Partnerships & Connections	Government - State	CEO	Canberra Health Services
Outer Setting	Partnerships & Connections	Government - State	CEO	Darling Downs and West Moreton Primary Health Network
Outer Setting	Partnerships & Connections	Government - State	CEO	Health and Wellbeing QLD
Outer Setting	Partnerships & Connections	Government - State	CEO, Bureau of Health Information	NSW Government
Outer Setting	Partnerships & Connections	Government - State	CEO, Cancer Institute NSW	NSW Government
Outer Setting	Partnerships & Connections	Government - State	Chief Aboriginal Health Officer	Government of SA
Outer Setting	Partnerships & Connections	Government - State	Chief Advisor on Cancer	VIC Government
Outer Setting	Partnerships & Connections	Government - State	Chief Allied and Scientific Health Officer, SA Health	Government of SA
Outer Setting	Partnerships & Connections	Government - State	Chief Allied Health Officer	ACT Government
Outer Setting	Partnerships & Connections	Government - State	Chief Allied Health Officer	VIC Government

Administrative Report

CFIR Domain	CFIR Domain Construct	Category	Position	Organisation
Outer Setting	Partnerships & Connections	Government - State	Chief Allied Health Officer	NT Government
Outer Setting	Partnerships & Connections	Government - State	Chief Digital Health Officer	VIC Government
Outer Setting	Partnerships & Connections	Government - State	Chief Executive, Dept for Health and Wellbeing	Government of SA
Outer Setting	Partnerships & Connections	Government - State	Chief Executive, Health Education & Training	NSW Government
Outer Setting	Partnerships & Connections	Government - State	Chief Executive, Health Share NSW	NSW Government
Outer Setting	Partnerships & Connections	Government - State	Chief Executive, Hunter New England Local Health Distri	NSW Government
Outer Setting	Partnerships & Connections	Government - State	Chief Executive, Illawarra Shoalhaven Local Health District	NSW Government
Outer Setting	Partnerships & Connections	Government - State	Chief Executive, Mid North Coast Local Health District	NSW Government
Outer Setting	Partnerships & Connections	Government - State	Chief Executive, Murrumbidgee Local Health District	NSW Government
Outer Setting	Partnerships & Connections	Government - State	Chief Executive, Nepean Blue Mountains Local Health District	NSW Government
Outer Setting	Partnerships & Connections	Government - State	Chief Executive, Northern NSW Local Health District	NSW Government
Outer Setting	Partnerships & Connections	Government - State	Chief Executive, Northern Sydney Local Health District	NSW Government

Administrative Report

CFIR Domain	CFIR Domain Construct	Category	Position	Organisation
Outer Setting	Partnerships & Connections	Government - State	Chief Executive, NSW Health Pathology	NSW Government
Outer Setting	Partnerships & Connections	Government - State	Chief Executive, South Eastern Sydney Local Health District	NSW Government
Outer Setting	Partnerships & Connections	Government - State	Chief Executive, Southern NSW Local Health District	NSW Government
Outer Setting	Partnerships & Connections	Government - State	Chief Executive, Sydney Local Health District	NSW Government
Outer Setting	Partnerships & Connections	Government - State	Chief Executive, Western NSW Local Health District	NSW Government
Outer Setting	Partnerships & Connections	Government - State	Chief Executive, Western Sydney Local Health District	NSW Government
Outer Setting	Partnerships & Connections	Government - State	Chief General Practice Advisor	VIC Government
Outer Setting	Partnerships & Connections	Government - State	Chief Health Officer	Government of WA
Outer Setting	Partnerships & Connections	Government - State	Chief Health Officer	Queensland Government
Outer Setting	Partnerships & Connections	Government - State	Chief Health Officer	NT Government
Outer Setting	Partnerships & Connections	Government - State	Chief Health Officer	VIC Government
Outer Setting	Partnerships & Connections	Government - State	Chief Health Officer Deputy Secretary Population and Public Health	NSW Government
Outer Setting	Partnerships & Connections	Government - State	Chief Medical Officer	VIC Government

Administrative Report

CFIR Domain	CFIR Domain Construct	Category	Position	Organisation
Outer Setting	Partnerships & Connections	Government - State	Chief Public Health Officer	Government of SA
Outer Setting	Partnerships & Connections	Government - State	Deputy Chief Medical Officer	VIC Government
Outer Setting	Partnerships & Connections	Government - State	Deputy Secretary Clinical Innovation and Research Chief Executive Agency for Clinical Innovation	NSW Government
Outer Setting	Partnerships & Connections	Government - State	Deputy Secretary Rural and Regional Health	NSW Government
Outer Setting	Partnerships & Connections	Government - State	Director General, Queensland Health	Queensland Government
Outer Setting	Partnerships & Connections	Government - State	Director General, The Department of Health	Government of WA
Outer Setting	Partnerships & Connections	Government - State	Executive Director, Office for Health and Medical Research	NSW Government
Outer Setting	Partnerships & Connections	Government - State	Health Service Chief Executive - Cairns and Hinterland	Queensland Government
Outer Setting	Partnerships & Connections	Government - State	Health Service Chief Executive - Central QLD	Queensland Government
Outer Setting	Partnerships & Connections	Government - State	Health Service Chief Executive - Central West	Queensland Government
Outer Setting	Partnerships & Connections	Government - State	Health Service Chief Executive - Darling Downs	Queensland Government

Administrative Report

CFIR Domain	CFIR Domain Construct	Category	Position	Organisation
Outer Setting	Partnerships & Connections	Government - State	Health Service Chief Executive - Gold Coast	Queensland Government
Outer Setting	Partnerships & Connections	Government - State	Health Service Chief Executive - Mackay	Queensland Government
Outer Setting	Partnerships & Connections	Government - State	Health Service Chief Executive - Metro North	Queensland Government
Outer Setting	Partnerships & Connections	Government - State	Health Service Chief Executive - Metro North	Queensland Government
Outer Setting	Partnerships & Connections	Government - State	Health Service Chief Executive - North West	Queensland Government
Outer Setting	Partnerships & Connections	Government - State	Health Service Chief Executive - South West	Queensland Government
Outer Setting	Partnerships & Connections	Government - State	Health Service Chief Executive - Sunshine Coast	Queensland Government
Outer Setting	Partnerships & Connections	Government - State	Health Service Chief Executive - Torres and Cape	Queensland Government
Outer Setting	Partnerships & Connections	Government - State	Health Service Chief Executive - Townsville	Queensland Government
Outer Setting	Partnerships & Connections	Government - State	Health Service Chief Executive - West Moreton	Queensland Government
Outer Setting	Partnerships & Connections	Government - State	Health Service Chief Executive - Wide Bay	Queensland Government
Outer Setting	Partnerships & Connections	Government - State	Minister for Health	ACT Government

Administrative Report

CFIR Domain	CFIR Domain Construct	Category	Position	Organisation
Outer Setting	Partnerships & Connections	Government - State	Minister for Health Minister for Health Infrastructure Minister for Ambulance Services Leader of the House	VIC Government
Outer Setting	Partnerships & Connections	Government - State	Minister for Health and Mental Health	Government of WA
Outer Setting	Partnerships & Connections	Government - State	Minister for Health and Wellbeing	Government of SA
Outer Setting	Partnerships & Connections	Government - State	Minister for Medical Research	NSW Government
Outer Setting	Partnerships & Connections	Government - State	Minister for Mental Health Minister for Population Health Minister for Justice Health	ACT Government
Outer Setting	Partnerships & Connections	Government - State	Minister for Health and Ambulance Services	Queensland Government
Outer Setting	Partnerships & Connections	Government - State	Minister for Health, Minister for Regional Health	NSW Government
Outer Setting	Partnerships & Connections	Government - State	Secretary, NSW Health	NSW Government
Outer Setting	Partnerships & Connections	Advisory Group	Chair	Clinical Excellence Queensland Queensland Cancer Clinical Network (QCaCN)
Outer Setting	Policies & Laws	Government - Federal	CEO	NH&MRC
Outer Setting	Policies & Laws	Government - Federal	CEO	Services Australia - Medicare

Administrative Report

CFIR Domain	CFIR Domain Construct	Category	Position	Organisation
Outer Setting	Policies & Laws	Professional Associations	CEO	The Rural Doctors Association of Australia (RDAA)
Outer Setting	Policies & Laws	Professional Associations	Federal President	Australian Nursing and Midwifery Federation
Outer Setting	Policies & Laws	Professional Associations	President	Australian College of Nurse Practitioners
Outer Setting	Policies & Laws	Professional Associations	President	Australian College of Nursing
Outer Setting	Policies & Laws	Professional Associations	National President	Australian Health Promotion Association
Outer Setting	Policies & Laws	Professional Associations	CEO	Australian Primary Health Care Nurses Association (APNA)
Outer Setting	Policies & Laws	Professional Associations	CEO	Cancer Nurses Society of Australia
Outer Setting	Policies & Laws	Professional Associations	President & Director	Continence Nurses Society Australia
Outer Setting	Innovation Deliverers - Indirect	Radiology	CEO Cancer Care	Icon Cancer Centre
Outer Setting	Innovation Deliverers - Indirect	Radiology	Group CEO	Icon Group
Outer Setting	Partnerships & Connections	Academic	Chancellor	The University of Western Australia
Outer Setting	Partnerships & Connections	Academic	Director	Freemasons Centre for Men's Health Discipline of Medicine (FCMHW)
Outer Setting	Partnerships & Connections	Academic	Executive Officer	South Australian Prostate Cancer Clinical Outcomes Collaborative (SA-PCCOC)

Administrative Report

CFIR Domain	CFIR Domain Construct	Category	Position	Organisation
Outer Setting	Partnerships & Connections	Academic	Executive Director	South Australian Health and Medical Research Institute (SAHMRI)
Outer Setting	Partnerships & Connections	Academic	Lead	Flinders Prostate Cancer Research Group
Outer Setting	Partnerships & Connections	Academic	President & Vice Chancellor	Flinders Centre for Innovation, Flinders University
Outer Setting	Partnerships & Connections	Academic	Lead	Monash Prostate Cancer Research Group
Outer Setting	Partnerships & Connections	Academic	Vice Chancellor & President	Macquarie University
Outer Setting	Partnerships & Connections	Academic	Vice Chancellor	Edith Cowan University
Outer Setting	Partnerships & Connections	Academic	Vice Chancellor	University of Adelaide
Outer Setting	Partnerships & Connections	Academic	Vice Chancellor & President	Griffith University
Outer Setting	Partnerships & Connections	Academic	Vice Chancellor and President	Monash University
Outer Setting	Partnerships & Connections	Academic	Vice Chancellor and President	The University of Queensland
Outer Setting	Partnerships & Connections	Academic	Vice Chancellor and President	University of NSW
Outer Setting	Partnerships & Connections	Academic	Vice Chancellor and President	University of Sydney
Outer Setting	Partnerships & Connections	Academic	Vice-Chancellor & President	Australian Catholic University

Administrative Report

CFIR Domain	CFIR Domain Construct	Category	Position	Organisation
Outer Setting	Partnerships & Connections	Academic	Vice-Chancellor & President	Bond University - Institute for Evidence Based Healthcare
Outer Setting	Partnerships & Connections	Academic	Centre Director	Australian Centre for Health Services Innovation (AusHSI) – Implementation, QUT
Outer Setting	Partnerships & Connections	Academic	Executive Director & Founder	Australian Prostate Cancer Research Centre–Queensland (APCRC-Q)
Outer Setting	Partnerships & Connections	Academic	CEO	Australian Prostate Centre
Outer Setting	Partnerships & Connections	Academic	Executive Director	Garvan Institute of Medical Research
Outer Setting	Partnerships & Connections	Academic	CEO	Harry Perkins Institute of Medical Research
Outer Setting	Partnerships & Connections	Academic	Lead	The Australian Prostate Cancer BioResource
Outer Setting	Partnerships & Connections	Academic	Director	UQ Centre for Clinical Research
Outer Setting	Partnerships & Connections	Government - State	CEO	NT Department of Health
Outer Setting	Partnerships & Connections	Government - State	Director General	ACT Health Directorate
Outer Setting	Partnerships & Connections	Government - State	Secretary	Tasmanian Department of Health
Outer Setting	Partnerships & Connections	Health Care Providers	CEO	Austin Health
Outer Setting	Partnerships & Connections	Health Care Providers	CEO	Chatswood Private Hospital

Administrative Report

CFIR Domain	CFIR Domain Construct	Category	Position	Organisation
Outer Setting	Partnerships & Connections	Health Care Providers	CEO	GenesisCare
Outer Setting	Partnerships & Connections	Health Care Providers	CEO	GPEX
Outer Setting	Partnerships & Connections	Health Care Providers	CEO	Greenslopes Private Hospital
Outer Setting	Partnerships & Connections	Health Care Providers	CEO	Healthscope
Outer Setting	Partnerships & Connections	Health Care Providers	CEO	Holmesglen Institute / Holmesglen Private Hospital
Outer Setting	Partnerships & Connections	Health Care Providers	Interim CEO	Mater Health
Outer Setting	Partnerships & Connections	Health Care Providers	CEO	Mulgrave Private Hospital
Outer Setting	Partnerships & Connections	Health Care Providers	CEO	Noosa & Nambour Private Hospitals
Outer Setting	Partnerships & Connections	Health Care Providers	CEO	QLD X-Ray
Outer Setting	Partnerships & Connections	Health Care Providers	CEO	SMS Healthcare
Outer Setting	Partnerships & Connections	Health Care Providers	CEO	South West Healthcare
Outer Setting	Partnerships & Connections	Health Care Providers	CEO	St Vincent's Hospital-BRISBANE
Outer Setting	Partnerships & Connections	Health Care Providers	CEO	St Vincent's Hospital-MELBOURNE
Outer Setting	Partnerships & Connections	Health Care Providers	Improvement Lead-Sub-Acute, Ambulatory Care and Community Services (SACS)	St Vincent's Hospital-SYDNEY

Administrative Report

CFIR Domain	CFIR Domain Construct	Category	Position	Organisation
Outer Setting	Partnerships & Connections	Health Care Providers	CEO	Sunshine Coast University Private Hospital
Outer Setting	Partnerships & Connections	Health Care Providers	CEO	The Bays Healthcare Group
Outer Setting	Partnerships & Connections	Health Care Providers	CEO & Managing Director	Sonic Healthcare
Outer Setting	Partnerships & Connections	Health Care Providers	Chief Executive	Alfred Health
Outer Setting	Partnerships & Connections	Health Care Providers	Chief Executive	Peter MacCallum Cancer Centre
Outer Setting	Partnerships & Connections	Health Care Providers	Director of Urology	Queen Elizabeth II Jubilee Hospital (QEII)
Outer Setting	Partnerships & Connections	Health Care Providers	Director of Urology	Royal Brisbane and Women's Hospital (RBWH)
Outer Setting	Partnerships & Connections	Health Care Providers	General Manager	GenesisCare
Outer Setting	Partnerships & Connections	Health Care Providers	General Manager	St Andrews War Memorial Hospital
Outer Setting	Partnerships & Connections	Health Care Providers	General Manager	The Wesley Hospital
Outer Setting	Partnerships & Connections	Health Care Providers	Group Chief Executive	Epworth Healthcare
Outer Setting	Partnerships & Connections	Health Care Providers	Interim CEO	Nexus Hospital Group
Outer Setting	Partnerships & Connections	Health Care Providers	Men's Health Clinical Nurse Consultant	Real Men's Health & St Vincent's Hospital in Sydney
Outer Setting	Partnerships & Connections	Health Care Providers	CEO	Ramsay Health Care

Administrative Report

CFIR Domain	CFIR Domain Construct	Category	Position	Organisation
Outer Setting	Partnerships & Connections	Health Care Providers	CEO	UnitingCare Australia
Outer Setting	Partnerships & Connections	Media	Health Editor	Financial Review
Outer Setting	Policies & Laws	Cancer Councils	CEO	Cancer Council ACT
Outer Setting	Policies & Laws	Cancer Councils	CEO	Cancer Australia
Outer Setting	Policies & Laws	Cancer Councils	CEO	Cancer Council Australia
Outer Setting	Policies & Laws	Cancer Councils	CEO	Cancer Council NSW
Outer Setting	Policies & Laws	Cancer Councils	CEO	Cancer Council NT
Outer Setting	Policies & Laws	Cancer Councils	CEO	Cancer Council QLD
Outer Setting	Policies & Laws	Cancer Councils	CEO	Cancer Council SA
Outer Setting	Policies & Laws	Cancer Councils	CEO	Cancer Council TAS
Outer Setting	Policies & Laws	Cancer Councils	CEO	Cancer Council VIC
Outer Setting	Policies & Laws	Cancer Councils	CEO	Cancer Council WA
Outer Setting	Policies & Laws	Professional Associations	CEO	Clinical Oncology Society of Australia (COSA)
Outer Setting	Policies & Laws	Professional Associations	CEO	Public Health Association of Australia (PHAA)

Administrative Report

CFIR Domain	CFIR Domain Construct	Category	Position	Organisation
Outer Setting	Policies & Laws	Professional Associations	CEO	Royal Australasian College of Physicians (RACP)
Outer Setting	Policies & Laws	Professional Associations	CEO	Royal Australasian College of Surgeons (RACS)
Outer Setting	Policies & Laws	Professional Associations	CEO	Royal Australian and New Zealand College of Radiologists (RANZCR)
Outer Setting	Policies & Laws	Professional Associations	CEO	Rural Medical Education Australia
Outer Setting	Policies & Laws	Professional Associations	CEO	The National Association of Testing Authorities Australia (NATA)
Outer Setting	Policies & Laws	Professional Associations	CEO	The Royal College of Pathologists of Australasia
Outer Setting	Policies & Laws	Professional Associations	Chair	Medical Oncology Group of Australia (MOGA)
Outer Setting	Policies & Laws	Professional Associations	President	Clinical Oncology Society of Australia (COSA)
Outer Setting	Policies & Laws	Professional Associations	President	Royal Australian and New Zealand College of Radiologists (RANZCR)
Outer Setting	Policies & Laws	Professional Associations	President	The Royal Australian College of Remote and Rural Medicine (ACRRM)
Outer Setting	Policies & Laws	Professional Associations	President	The Royal College of Pathologists of Australasia

Administrative Report

CFIR Domain	CFIR Domain Construct	Category	Position	Organisation
Outer Setting	Policies & Laws	Professional Associations	President & Chair	Royal Australasian College of Physicians (RACP)
Outer Setting	Policies & Laws	Professional Associations	Secretary General and Group CEO	The Australian Medical Association (AMA)
Inner Setting	General Practice Setting	General Practice	CEO	General Practice Supervisors Australia (GPSA)
Inner Setting	General Practice Setting	General Practice	Chair	The Australian General Practitioners Alliance (AGPA)
Inner Setting	General Practice Setting	General Practice	President	Royal Australasian College of General Practitioners (RACGP)
Inner Setting	Urological Practice Setting	Urological Practice	CEO	Australian and New Zealand Urogenital and Prostate Cancer Trials Group (ANZUP)
Inner Setting	Urological Practice Setting	Urological Practice	CEO	Urological Society of Australia and New Zealand (USANZ)
Inner Setting	Urological Practice Setting	Urological Practice	Director	The Urological Cancer Centre
Inner Setting	Urological Practice Setting	Urological Practice	Director	Urology SA
Inner Setting	Urological Practice Setting	Urological Practice	Head of Department	Sir Charles Gairdner Hospital - Urology Department
Inner Setting	Urological Practice Setting	Urological Practice	Managing Director	Brisbane Urology Clinic
Inner Setting	Urological Practice Setting	Urological Practice	President	Urological Society of Australia and New Zealand (USANZ)

Administrative Report

CFIR Domain	CFIR Domain Construct	Category	Position	Organisation
Inner Setting	Urological Practice Setting	Urological Practice	Lead	AndroUrology Centre
Inner Setting	Urological Practice Setting	Urological Practice	President	The Australia and New Zealand Urological Nurses Society (ANZUNS)
Inner Setting	Urological Practice Setting	Urological Practice	Vice-President	The Australia and New Zealand Urological Nurses Society (ANZUNS)
Inner Setting	Urological Practice Setting	Urological Practice	Lead	Australian Urology Associates Pty Ltd
Individual Setting	Innovation Deliverers - Indirect	Pathology	Acting CEO	Bupa Asia Pacific
Individual Setting	Innovation Deliverers - Indirect	Pathology	CEO	Australian Clinical Lab - VIC
Individual Setting	Innovation Deliverers - Indirect	Pathology	CEO	Melbourne Pathology
Individual Setting	Innovation Deliverers - Indirect	Pathology	CEO	PathWest Laboratory Medicine WA
Individual Setting	Innovation Deliverers - Indirect	Pathology	CEO & Managing Director	Australian Clinical Lab
Individual Setting	Innovation Deliverers - Indirect	Pathology	CEO NSW and ACT	Australian Clinical Lab
Individual Setting	Innovation Deliverers - Indirect	Pathology	CEO WA, SA and NT	Australian Clinical Lab - WA

Administrative Report

CFIR Domain	CFIR Domain Construct	Category	Position	Organisation
Individual Setting	Innovation Deliverers - Indirect	Pathology	Chief Executive	NSW Health Pathology
Individual Setting	Innovation Deliverers - Indirect	Pathology	Clinical Service Director	SA Pathology
Individual Setting	Innovation Deliverers - Indirect	Pathology	Executive Branch Manager	ACT Pathology
Individual Setting	Innovation Deliverers - Indirect	Pathology	Executive Director	Pathology QLD
Individual Setting	Innovation Deliverers - Indirect	Pathology	Lead Pathologist	PathWest Laboratory Medicine WA
Individual Setting	Innovation Deliverers - Indirect	Pathology	CEO & Executive Director	Australian Clinical Lab - QLD
Individual Setting	Innovation Deliverers - Indirect	Pathology	Managing Partner	Sullivan Nicolaides Pathology
Individual Setting	Innovation Deliverers - Indirect	Pathology	CEO	Territory Pathology
Individual Setting	Innovation Deliverers - Indirect	Private Health Insurance	CEO	Medibank Australia
Individual Setting	Innovation Deliverers - Indirect	Private Health Insurance	CEO	Private Health Care Australia
Individual Setting	Innovation Deliverers - Indirect	Private Health Insurance	CEO	Radiology SA

Administrative Report

CFIR Domain	CFIR Domain Construct	Category	Position	Organisation
Individual Setting	Innovation Deliverers - Indirect	Private Health Insurance	Managing Director & CEO	NIB
Individual Setting	Innovation Deliverers - Indirect	Private Health Insurance	CEO	Doctor's Health Fund
Individual Setting	Innovation Deliverers - Indirect	Private Health Insurance	CEO	Australian Private Hospitals Association (APHA)
Individual Setting	Innovation Deliverers - Indirect	Radiology	Clinical Leadership	Radiology VIC
Individual Setting	Innovation Deliverers - Indirect	Health recruitment	CEO	ehealthmatch
Individual Setting	Innovation Deliverers - Indirect	Prostate Cancer Specialist Nurses	PCFA Prostate Cancer Specialist Nursing Network (n=115)	PCFA Prostate Cancer Specialist Nursing Network
Individual Setting	Innovation Recipients	At-risk populations	CEO	Afri-Aus Care Inc
Individual Setting	Innovation Recipients	At-risk populations	CEO	African Australian Network Alliance Ltd
Individual Setting	Innovation Recipients	At-risk populations	CEO & Managing Director	The Australian African Foundation for Retention and Opportunity (AAFRO)
Individual Setting	Innovation Recipients	At-risk populations	Public Officer	African Communities Foundation Australia
Individual Setting	Innovation Recipients	At-risk populations	Co-Founder and Director	African Family Services
Individual Setting	Innovation Recipients	At-risk populations	Founder & Chairman	African Australian Advocacy Centre

Administrative Report

CFIR Domain	CFIR Domain Construct	Category	Position	Organisation
Individual Setting	Innovation Recipients	At-risk populations	President	OCI Foundation
Individual Setting	Innovation Recipients	At-risk populations	President	QLD African Communities Council (QACC)
Individual Setting	Innovation Recipients	At-risk populations	Program Director & Board Member	<u>Community Abundance Inc</u>
Individual Setting	Innovation Recipients	At-risk populations	Lead	UMUNTU NGABANTU Ltd
Individual Setting	Innovation Recipients	Consumer Groups	CEO	Australian Men's Health Forum (AMHF)
Individual Setting	Innovation Recipients	Consumer Groups	CEO	The Australian Men's Health Forum (AMHF)
Individual Setting	Innovation Recipients	Consumer Groups	CEO & Director	Healthy Male
Individual Setting	Innovation Recipients	Consumer Groups	Chair	Healthy Male
Individual Setting	Innovation Recipients	Consumer Groups	Chairman	Australian Men's Shed Association (AMSA)
Individual Setting	Innovation Recipients	Consumer Groups	Content Manager	The Australian Men's Health Forum (AMHF)
Individual Setting	Innovation Recipients	Consumer Groups	Director	Global Action on Men's Health
Individual Setting	Innovation Recipients	Consumer Groups	Director	Men's Health Melbourne
Individual Setting	Innovation Recipients	Consumer Groups	Founder/President	<u>SA Brothers</u>
Individual Setting	Innovation Recipients	Consumer Groups	Head of Content	Men's Health Australia
Individual Setting	Innovation Recipients	Consumer Groups	President	Men's Wellbeing

Administrative Report

CFIR Domain	CFIR Domain Construct	Category	Position	Organisation
Individual Setting	Innovation Recipients	Priority populations - CALD	CEO	Federation of Ethnic Communities' Councils of Australia (FECCA)
Individual Setting	Innovation Recipients	Priority populations - CALD	CEO	Multicultural Communities Council of South Australia (MCCSA)
Individual Setting	Innovation Recipients	Priority populations - CALD	Executive Director	Australian Multicultural Foundation
Individual Setting	Innovation Recipients	Priority populations - CALD	Manager	<u>The Centre for Culture, Ethnicity and Health (CEH)</u>
Individual Setting	Innovation Recipients	Priority populations - CALD	Project Officer	Multicultural Communities Council of South Australia (MCCSA) - Men's Council
Individual Setting	Innovation Recipients	Priority populations - CALD	Communications Director	Australian Multicultural Health Collaborative
Individual Setting	Innovation Recipients	Priority populations - CALD	Founder, Director and CEO	Centre for migrant and refugee health
Individual Setting	Innovation Recipients	Priority populations - CALD	Chair	Culturally and Linguistically Diverse Communities Health Advisory Group
Individual Setting	Innovation Recipients	Priority populations - CALD	CEO	Partners in Culturally Appropriate Care (PICAC)
Individual Setting	Innovation Recipients	Priority populations - CALD	CEO	Refugee Council of Australia

Administrative Report

CFIR Domain	CFIR Domain Construct	Category	Position	Organisation
Individual Setting	Innovation Recipients	Priority populations - CALD	Chair	The Migrant & Refugee Health Partnership
Individual Setting	Innovation Recipients	Priority Populations - Defence	CEO	Avant Mutual
Individual Setting	Innovation Recipients	Priority Populations - Defence	Secretary	Department of Veterans' Affairs
Individual Setting	Innovation Recipients	Priority Populations - Defence	CEO	Medical Protection Society
Individual Setting	Innovation Recipients	Priority Populations - Defence	Program Director	Military and Emergency Services Health Australia
Individual Setting	Innovation Recipients	Priority Populations - Defence	Medical Director	National Centre for Veteran's Healthcare
Individual Setting	Innovation Recipients	Priority Populations - Defence	Secretary	Veteran Health Association
Individual Setting	Innovation Recipients	Priority populations - Disability	CEO	Australian Federation of Disability Organisations
Individual Setting	Innovation Recipients	Priority populations - Disability	CEO	First Peoples Disability Network Australia
Individual Setting	Innovation Recipients	Priority populations - Disability	CEO	People with a Disability Australia
Individual Setting	Innovation Recipients	Priority populations - Firefighters	CEO	Australasian Fire and Emergency Service Authorities Council/Australian Fire Authorities Council

Administrative Report

CFIR Domain	CFIR Domain Construct	Category	Position	Organisation
Individual Setting	Innovation Recipients	Priority populations - Firefighters	Chairperson	Council of Australian Volunteer Fire Associations
Individual Setting	Innovation Recipients	Priority populations - Firefighters	CEO	National Aerial Firefighting Centre
Individual Setting	Innovation Recipients	Priority populations - Firefighters	CEO	National Rural Health Alliance
Individual Setting	Innovation Recipients	Priority populations - Firefighters	Commissioner	National Rural Health (Commonwealth)
Individual Setting	Innovation Recipients	Priority populations - Firefighters	Acting CEO	Rural Fire Service - QLD
Individual Setting	Innovation Recipients	Priority populations - Firefighters	President	United Firefighters Union Australia
Individual Setting	Innovation Recipients	Priority populations – Aboriginal and Torres Strait Islander Males	Aboriginal Health Hub-Director, Aboriginal Health Strategy. Western Sydney Local Health District	NSW Government
Individual Setting	Innovation Recipients	Priority populations – Aboriginal and Torres Strait Islander Males	CEO	Aboriginal Health Council of SA
Individual Setting	Innovation Recipients	Priority populations – Aboriginal and Torres Strait Islander Males	CEO	Aboriginal Health Council WA

Administrative Report

CFIR Domain	CFIR Domain Construct	Category	Position	Organisation
Individual Setting	Innovation Recipients	Priority populations – Aboriginal and Torres Strait Islander Males	CEO	Aboriginal Medical Services Alliance NT (AMSANT)
Individual Setting	Innovation Recipients	Priority populations – Aboriginal and Torres Strait Islander Males	CEO	Anyinginyi Health Aboriginal Corporation & Director NACCHO & Deputy Director First Nations Engagement and Research Strategy Charles Darwin University
Individual Setting	Innovation Recipients	Priority populations – Aboriginal and Torres Strait Islander Males	CEO	Australian Institute of Aboriginal and Torres Strait Islander Studies (AIATSIS) & Director NACCHO
Individual Setting	Innovation Recipients	Priority populations – Aboriginal and Torres Strait Islander Males	CEO	Bendigo and District Aboriginal Co-operative & Director NACCHO
Individual Setting	Innovation Recipients	Priority populations – Aboriginal and Torres Strait Islander Males	CEO	Danila Dilba Health Service & Director NACCHO & Deputy Chair Aboriginal Medical Services Alliance NT (AMSANT)
Individual Setting	Innovation Recipients	Priority populations – Aboriginal and Torres Strait Islander Males	CEO	Dubbo, Coonamble and Gilgandra Aboriginal Health Services & Director NACCHO
Individual Setting	Innovation Recipients	Priority populations – Aboriginal and Torres Strait Islander Males	CEO	Illawarra Aboriginal Medical Service & Director NACCHO

Administrative Report

CFIR Domain	CFIR Domain Construct	Category	Position	Organisation
Individual Setting	Innovation Recipients	Priority populations – Aboriginal and Torres Strait Islander Males	CEO	Kimberley Aboriginal Medical Services Ltd & Director NACCHO & Council Member of Coalition of Peaks
Individual Setting	Innovation Recipients	Priority populations – Aboriginal and Torres Strait Islander Males	CEO	National Aboriginal Community Controlled Health Organisation (NACCHO)
Individual Setting	Innovation Recipients	Priority populations – Aboriginal and Torres Strait Islander Males	CEO	National Indigenous Australians Agency
Individual Setting	Innovation Recipients	Priority populations – Aboriginal and Torres Strait Islander Males	CEO	Palm Island Community Company & Director NACCHO
Individual Setting	Innovation Recipients	Priority populations – Aboriginal and Torres Strait Islander Males	CEO	The Victorian Aboriginal Community Controlled Health Organisation (VACCHO)
Individual Setting	Innovation Recipients	Priority populations – Aboriginal and Torres Strait Islander Males	Chair	Aboriginal Health Council of SA Nunyarra Aboriginal Health Service Inc & Director NACCHO
Individual Setting	Innovation Recipients	Priority populations – Aboriginal and Torres Strait Islander Males	Chair	Victorian Aboriginal Community Controlled Health Organisation (VACCHO), Director NACCHO & CEO Victorian Aboriginal Health Service (VAHS)

Administrative Report

CFIR Domain	CFIR Domain Construct	Category	Position	Organisation
Individual Setting	Innovation Recipients	Priority populations – Aboriginal and Torres Strait Islander Males	Chair of the Board	National Aboriginal Community Controlled Health Organisation (NACCHO)
Individual Setting	Innovation Recipients	Priority populations – Aboriginal and Torres Strait Islander Males	COO	Tasmanian Aboriginal Centre (TAC) & Director NACCHO
Individual Setting	Innovation Recipients	Priority populations – Aboriginal and Torres Strait Islander Males	Deputy Chair	Ngaayatjarra Group and Chair Kanpa Community Council & Director NACCHO
Individual Setting	Innovation Recipients	Priority populations – Aboriginal and Torres Strait Islander Males	Director	Australian Indigenous HealthInfoNet
Individual Setting	Innovation Recipients	Priority populations – Aboriginal and Torres Strait Islander Males	Director Aboriginal Health and Primary Partnerships (Mid North Coast Local Health District)	NSW Government
Individual Setting	Innovation Recipients	Priority populations – Aboriginal and Torres Strait Islander Males	Director Aboriginal Health, Murrumbidgee Local Health District	NSW Government
Individual Setting	Innovation Recipients	Priority populations – Aboriginal and Torres Strait Islander Males	Director Aboriginal Health, Southern NSW Local Health District	NSW Government
Individual Setting	Innovation Recipients	Priority populations – Aboriginal and Torres Strait Islander Males	Executive Director Aboriginal Health and Wellbeing, Western NSW Local Health District	NSW Government

Administrative Report

CFIR Domain	CFIR Domain Construct	Category	Position	Organisation
Individual Setting	Innovation Recipients	Priority populations – Aboriginal and Torres Strait Islander Males	Executive Director, Aboriginal Health	NSW Government
Individual Setting	Innovation Recipients	Priority populations – Aboriginal and Torres Strait Islander Males	General Manager	SA Aboriginal Education and Training Consultative Council
Individual Setting	Innovation Recipients	Priority populations – Aboriginal and Torres Strait Islander Males	Minister for Health Minister for Mental Health Minister for Alcohol Policy Minister for Aboriginal Affairs Minister for Housing, Local Government and Community Development Minister for Essential Services	NT Government
Individual Setting	Innovation Recipients	Priority populations – Aboriginal and Torres Strait Islander Males	President	NSW Aboriginal Education Consultative Group (AECG)
Individual Setting	Innovation Recipients	Priority populations – Aboriginal and Torres Strait Islander Males	Secretary	Aboriginal Health Council of South Australia & Director NACCHO
Individual Setting	Innovation Recipients	Priority populations – Aboriginal and Torres Strait Islander Males		Aboriginal Engagement Directorate

Administrative Report

CFIR Domain	CFIR Domain Construct	Category	Position	Organisation
Individual Setting	Innovation Recipients	Priority populations – Aboriginal and Torres Strait Islander Males		Charleville & Western Areas Aboriginal Torres Strait Islanders Community Health Ltd (CWAATSICH) & Director NACCHO
Individual Setting	Innovation Recipients	Priority populations – Aboriginal and Torres Strait Islander Males	Editor in Chief	Croakey Health Media
Individual Setting	Innovation Recipients	Priority populations – Aboriginal and Torres Strait Islander Males	CEO	Torres Health Indigenous Corporation
Individual Setting	Innovation Recipients	Priority populations – Aboriginal and Torres Strait Islander Males	CEO	Gujaga Foundation
Individual Setting	Innovation Recipients	Priority populations – Aboriginal and Torres Strait Islander Males	Acting CEO	Queensland Aboriginal and Islander Health Council (QAIHC)
Individual Setting	Innovation Recipients	Priority populations – Aboriginal and Torres Strait Islander Males	Acting CEO	Northern Aboriginal and Torres Strait Islander Health Alliance (NATSIHA)
Individual Setting	Innovation Recipients	Priority populations - LGBTQIA+	CEO	<u>ACON</u>
Individual Setting	Innovation Recipients	Priority populations - LGBTQIA+	Manager, Cancer Programs	<u>ACON</u>

Administrative Report

CFIR Domain	CFIR Domain Construct	Category	Position	Organisation
Individual Setting	Innovation Recipients	Priority populations - LGBTQIA+	CEO	<u>LGBTIQ+ Health Australia</u>
Individual Setting	Innovation Recipients	Priority populations - LGBTQIA+	Chair	Pride Foundation Australia
Individual Setting	Innovation Recipients	Priority populations - LGBTQIA+	Chair	<u>Transgender Victoria</u>
Individual Setting	Innovation Recipients	Priority populations - LGBTQIA+	Chair, DCA Board	Diversity Council Australia
Individual Setting	Innovation Recipients	Priority populations - Prison	Clinical Nurse Manager	WA Prison Health
Individual Setting	Innovation Recipients	Priority populations - Prison	Director of Office for Prison Health and Wellbeing	QLD Health
Individual Setting	Innovation Recipients	Priority populations - Prison	Executive Director of Nursing, Midwifery and Clinical Governance	Justice Health NSW
Individual Setting	Innovation Recipients	Priority populations - Prison	Manager Palliative Care, Cancer, Aged & Chronic Care	Justice Health NSW
Individual Setting	Innovation Recipients	Priority populations - Prison	Director	SA Prison Health Service
Individual Setting	Innovation Recipients	Priority populations - Prison	Executive Director	Justice Health - VIC
Individual Setting	Innovation Recipients	Priority populations - Rural Remote	CEO	CRANaplus

Administrative Report

CFIR Domain	CFIR Domain Construct	Category	Position	Organisation
Individual Setting	Innovation Recipients	Priority populations - LGBTQIA+	CEO	Rainbow Health
Individual Setting	Innovation Recipients	Priority populations - LGBTQIA+	CEO	Australian Professional Association for Trans Health
Individual Setting	Innovation Recipients	Priority populations - LGBTQIA+	CEO	Diversity Council Australia
Individual Setting	Innovation Recipients	Priority populations - Firefighters	Commissioner	NSW Rural Fire Service
Individual Setting	Innovation Recipients	Priority populations - Firefighters	CEO	Country Fire Authority VIC
Individual Setting	Innovation Recipients	Priority populations - Firefighters	CEO	Country Fire Service SA
Individual Setting	Innovation Recipients	Priority populations - Firefighters	Commissioner	Dept of Fire and Emergency Services WA (DFES)
Individual Setting	Innovation Recipients	PCFA Consumer Groups	Group Leader(s)	Bairnsdale East Gippsland Biggest Ever Blokes' Lunch
Individual Setting	Innovation Recipients	PCFA Consumer Groups	Group Leader(s)	Latrobe Valley-Morwell - Latrobe Biggest Ever Blokes' Lunch
Individual Setting	Innovation Recipients	PCFA Consumer Groups	Group Leader(s)	Ballarat Biggest Ever Blokes' Lunch
Individual Setting	Innovation Recipients	PCFA Consumer Groups	Group Leader(s)	Melbourne Biggest Ever Blokes' Lunch

Administrative Report

CFIR Domain	CFIR Domain Construct	Category	Position	Organisation
Individual Setting	Innovation Recipients	PCFA Consumer Groups	Group Leader(s)	Casey Cardinia Biggest Ever Blokes' Lunch
Individual Setting	Innovation Recipients	PCFA Consumer Groups	Group Leader(s)	Echuca's Biggest Ever Blokes Lunch
Individual Setting	Innovation Recipients	PCFA Consumer Groups	Group Leader(s)	Shepparton's Biggest Ever Blokes Lunch
Individual Setting	Innovation Recipients	PCFA Consumer Groups	Group Leader(s)	Wellington's Biggest Ever Blokes BBQ
Individual Setting	Innovation Recipients	PCFA Consumer Groups	Group Leader(s)	Baw Baw Big Blokes BBQ
Individual Setting	Innovation Recipients	PCFA Consumer Groups	Group Leader(s)	Wagga Wagga Biggest Ever Blokes' Lunch
Individual Setting	Innovation Recipients	PCFA Consumer Groups	Group Leader(s)	Bendigo's Biggest Ever Blokes' Lunch
Individual Setting	Innovation Recipients	PCFA Consumer Groups	Prostate Cancer Support Group Leader(s)	ACT Region Inc. PCSG
Individual Setting	Innovation Recipients	PCFA Consumer Groups	Prostate Cancer Support Group Leader(s)	Bendigo PCSG
Individual Setting	Innovation Recipients	PCFA Consumer Groups	Prostate Cancer Support Group Leader(s)	Brisbane PCSG
Individual Setting	Innovation Recipients	PCFA Consumer Groups	Prostate Cancer Support Group Leader(s)	Central Coast PCSG

Administrative Report

CFIR Domain	CFIR Domain Construct	Category	Position	Organisation
Individual Setting	Innovation Recipients	PCFA Consumer Groups	Prostate Cancer Support Group Leader(s)	Central Queensland PSCG
Individual Setting	Innovation Recipients	PCFA Consumer Groups	Prostate Cancer Support Group Leader(s)	Dandenong PCSG
Individual Setting	Innovation Recipients	PCFA Consumer Groups	Prostate Cancer Support Group Leader(s)	Devonport PCSG
Individual Setting	Innovation Recipients	PCFA Consumer Groups	Prostate Cancer Support Group Leader(s)	Dural & District PCSG
Individual Setting	Innovation Recipients	PCFA Consumer Groups	Prostate Cancer Support Group Leader(s)	Eltham Prostate Cancer Information & Support Group
Individual Setting	Innovation Recipients	PCFA Consumer Groups	Prostate Cancer Support Group Leader(s)	Geelong PSG
Individual Setting	Innovation Recipients	PCFA Consumer Groups	Prostate Cancer Support Group Leader(s)	Griffith PCSG
Individual Setting	Innovation Recipients	PCFA Consumer Groups	Prostate Cancer Support Group Leader(s)	Hunter Prostate Cancer Awareness & Support Group
Individual Setting	Innovation Recipients	PCFA Consumer Groups	Prostate Cancer Support Group Leader(s)	Ipswich PSCG
Individual Setting	Innovation Recipients	PCFA Consumer Groups	Prostate Cancer Support Group Leader(s)	Mandurah PCSG
Individual Setting	Innovation Recipients	PCFA Consumer Groups	Prostate Cancer Support Group Leader(s)	Maryborough PCSG

Administrative Report

CFIR Domain	CFIR Domain Construct	Category	Position	Organisation
Individual Setting	Innovation Recipients	PCFA Consumer Groups	Prostate Cancer Support Group Leader(s)	Moreton Bay Regional PCSG
Individual Setting	Innovation Recipients	PCFA Consumer Groups	Prostate Cancer Support Group Leader(s)	Narooma Prostate Cancer Support Group
Individual Setting	Innovation Recipients	PCFA Consumer Groups	Prostate Cancer Support Group Leader(s)	North West Queensland PCSG
Individual Setting	Innovation Recipients	PCFA Consumer Groups	Prostate Cancer Support Group Leader(s)	Peninsula PCSG
Individual Setting	Innovation Recipients	PCFA Consumer Groups	Prostate Cancer Support Group Leader(s)	Prostate Heidelberg CSG
Individual Setting	Innovation Recipients	PCFA Consumer Groups	Prostate Cancer Support Group Leader(s)	Prostate Pride Peer Support Group
Individual Setting	Innovation Recipients	PCFA Consumer Groups	Prostate Cancer Support Group Leader(s)	Ringwood PCSG
Individual Setting	Innovation Recipients	PCFA Consumer Groups	Prostate Cancer Support Group Leader(s)	Shoalhaven PCSG
Individual Setting	Innovation Recipients	PCFA Consumer Groups	Prostate Cancer Support Group Leader(s)	Snowy Monaro PCSG
Individual Setting	Innovation Recipients	PCFA Consumer Groups	Prostate Cancer Support Group Leader(s)	St George PCSG
Individual Setting	Innovation Recipients	PCFA Consumer Groups	Prostate Cancer Support Group Leader(s)	Sunraysia PCSG

Administrative Report

CFIR Domain	CFIR Domain Construct	Category	Position	Organisation
Individual Setting	Innovation Recipients	PCFA Consumer Groups	Prostate Cancer Support Group Leader(s)	Sunshine Coast PCSG
Individual Setting	Innovation Recipients	PCFA Consumer Groups	Prostate Cancer Support Group Leader(s)	Toowoomba PCSG
Individual Setting	Innovation Recipients	PCFA Consumer Groups	Prostate Cancer Support Group Leader(s)	WA Remote, Rural & Regional PCSG (Via Zoom)
Individual Setting	Innovation Recipients	PCFA Consumer Groups	Prostate Cancer Support Group Leader(s)	Whitsunday Prostate Cancer Support Group
Individual Setting	Innovation Recipients	PCFA Consumer Groups	PCFA Life Force Program Members (n=332)	PCFA
International stakeholders			CEO	Prostate Cancer UK
International stakeholders			CEO	Prostate Scotland
International stakeholders			Global Director, Prostate Cancer	Movember

Appendix 3: Sample meeting agenda

REVIEW OF THE 2016 CLINICAL PRACTICE GUIDELINES FOR PROSTATE SPECIFIC ANTIGEN (PSA) TESTING & EARLY MANAGEMENT OF TEST-DETECTED PROSTATE CANCER

PROJECT STEERING COMMITTEE AGENDA

Date: xxxx
Time: xxxx
Location: via Microsoft Teams (link detailed below)

	AGENDA	WHO	PAGE
1.	Acknowledgement of Country	Jeff Dunn	-
2.	Welcome	Jeff Dunn	-
3.	Declaration of Conflict of Interests	ALL	-
4.	Confidentiality	ALL	-
5.	Minutes from previous meeting	Jeff Dunn	X
6.	Timeline	Jeff Dunn	x
7.	Draft Table of Contents	Jeff Dunn	x
8.	Public Consultation	Jeff Dunn	
8.1.	Requirements		x
8.2.	Recommendations		x
8.3.	Specific Questions for Consultation?		x
8.4.	Language		x
9.	Peer Reviewers	Jeff Dunn	x
10.	Next Steps	Jeff Dunn	-
11.	Meeting Schedule	Jeff Dunn	-
12.	Any other items to discuss	ALL	-
13.	Summary & close	Jeff Dunn	-

Appendix 4: Declaration of Conflicts of Interest

PROJECT STEERING COMMITTEE (PSC)

Name	Relevant discipline	Declaration of interest	Conflict management
Prof. Jeffrey Dunn AO	<ul style="list-style-type: none"> Chief of Mission & Head of Research, Prostate Cancer Foundation of Australia Professor UniSQ Deputy Chair West Moreton HHS 	None to declare	n/a no significant conflicts of interest identified
A/Prof. Peter Heathcote	<ul style="list-style-type: none"> Board Member Prostate Cancer Foundation Australia. Fellow, Urological Society of Australia and New Zealand. Medicolegal private practice 	None to declare	n/a no significant conflicts of interest identified
Prof. Mark Frydenberg	<ul style="list-style-type: none"> Royal Australasian College of Surgeons Council member Urological Society of Australia and New Zealand Director Avant Mutual Director Peninsula Health Director Monash University Professor 	None to declare	n/a no significant conflicts of interest identified
Mr. Mark Nevin	<ul style="list-style-type: none"> Cancer Council Australia CEO Standards Australia's IT-014-20 Telehealth and Virtual Care Committee, representing Australasian Institute of Digital Health (AIDH) Other volunteering as expert advisor on working groups for AIDH on digital health, AI and workforce upskilling. 	None to declare	n/a no significant conflicts of interest identified
Prof. Vivienne Milch	Medical Director Cancer Australia	None to declare	n/a no significant conflicts of interest identified
A/Prof. Weranja Ranasinghe	<ul style="list-style-type: none"> Consultant Urologist and Clinical Lead Genitourinary Oncology Surgery at Monash Health Consultant Urologist Austin Health Lead, Special Genitourinary Oncology Advisory Group Urologic Society of Australia and New Zealand (USANZ) Deputy Academic Lead, Cabrini Research Representative, RACS Victorian State Committee 	None to declare	n/a no significant conflicts of interest identified

Administrative Report

Name	Relevant discipline	Declaration of interest	Conflict management
Dr. Brett Montgomery	<ul style="list-style-type: none"> Senior Lecturer, University of Western Australia General Practitioner, East Fremantle Medical Centre 	None to declare	n/a no significant conflicts of interest identified
Dr. Tanya Holt	<ul style="list-style-type: none"> Senior radiation oncologist Princess Alexandra Hospital. Brisbane Fellow college of ANZ Radiologists Executive member FROGG faculty radiation oncology genitourinary group 	None to declare	n/a no significant conflicts of interest identified
Prof. Eric Chung	<ul style="list-style-type: none"> Urological Society of Australia and New Zealand (USANZ) Chair of the Male Lower Urinary Tract section and Past Chair of the Andrology Section International Society of Sexual Medicine, President-elect AndroUrology Centre for Male Sexual, Urinary and Reproductive Excellence - Clinical Director University of Queensland - Professor of Surgery Princess Alexandra Hospital - Senior VMO Urologist 	None to declare	n/a no significant conflicts of interest identified
Dr. Ken Sikaris	Director, Chemical Pathology Dorevitch Pathology (Healix subsidiary)	None to declare	n/a no significant conflicts of interest identified
Prof. Karen Canfell	<ul style="list-style-type: none"> Professor of Public Health & NHMRC Leadership Fellow, The University of Sydney Member NHMRC-MRFF PHHSC Chair Cancer Council Australia Cancer Screening and Immunisation Committee Member Commonwealth of Nations Cervical Cancer Taskforce Vice-President, AOGIN Society Member NBCF Research Advisory Committee. 	<p>Although I do not believe the below are conflicts, I declare these interests in the spirit of transparency:</p> <p>1) I have published research related to PSA testing, estimate of benefits and harms;</p> <p>2) I am the named lead of the research team at the Daffodil Centre which is providing technical support for the guidelines development, and have assisted in this process. Note that I have now moved institutions to the University of Sydney.</p> <p>3) I am co-PI on the</p>	n/a no significant conflicts of interest identified

Administrative Report

Name	Relevant discipline	Declaration of interest	Conflict management
		Compass trial for cervical screening which the Australian Centre for the Prevention of Cervical Cancer (ACPCC), has received kits and partial funding from the Australian Government and Roche. I am co-lead on the 'Elimination Partnership in the Indo-Pacific for Cervical Cancer', which has received support from the Australian Government, Minderoo Foundation and equipment donations from Cepheid Inc.	
Prof. Sue Evans	Head, Victorian Cancer Registry Division, Cancer Council Victoria.	None to declare	n/a no significant conflicts of interest identified
A/Prof. Peter Malouf	Adj Associate Professor, James Cook University	None to declare	n/a no significant conflicts of interest identified
Ms. Patricia Gaye McPherson	Consumer representative with Prostate Cancer Foundation of Australia	None to declare	n/a no significant conflicts of interest identified
Mr. John Williams	Ambassador for PCFA	None to declare	n/a no significant conflicts of interest identified
Mr. Andrei Norris	<ul style="list-style-type: none"> Employee Department of Premier and Cabinet, Hobart Consumer advocate for PCFA Movember Ambassador Steering Committee member, Prostate Cancer Outcomes Register, Tasmania Committee member, Rose Bay High School Association, Hobart 	None to declare	n/a no significant conflicts of interest identified
Ms. Anne Savage	CEO Prostate Cancer Foundation of Australia	None to declare	n/a no significant conflicts of interest identified
A/Prof. David Smith	<ul style="list-style-type: none"> Interim Deputy Director, Prostate Cancer Stream Lead, The Daffodil Centre, Cancer Council NSW and the University of Sydney 	None to declare	n/a no significant conflicts of interest identified

Administrative Report

Name	Relevant discipline	Declaration of interest	Conflict management
	<ul style="list-style-type: none">• Chair of the Prostate Cancer Outcomes Registry, Australia and New Zealand, Advisory Committee• Member of the Prostate Cancer Outcomes Registry, Australia and New Zealand, Governance Committee• Member of the Cancer Council Australia Cancer Screening and Immunisation Committee		

DRAFT for NHMRC Approval

PAST MEMBERS - PROJECT STEERING COMMITTEE MEMBERS (PSC)

Name	Relevant discipline	Declaration of interest	Conflict management
Prof. Tanya Buchanan	CEO, Dementia Australia (previously CEO Cancer Council Australia)	None to declare	n/a no significant conflicts of interest identified
Ms. Megan Varlow	<ul style="list-style-type: none"> Director Cancer Control Policy, Cancer Council Australia Member, Australian Blood Cancer Taskforce Member Governance Authority, Australian Prevention Partnership Centre 	None to declare	n/a no significant conflicts of interest identified
A/Prof. Deanne Minniecon	<ul style="list-style-type: none"> Board member - West Moreton Hospital and Health Service Board member - Darling Downs & West Moreton PHN Group Executive, Diabetes Australia. 	None to declare	n/a no significant conflicts of interest identified

ADVISORY GROUPS

Aboriginal & Torres Strait Islander

Name	Relevant discipline	Declaration of interest	Conflict management
A/Prof. Deanne Minniecon	<ul style="list-style-type: none"> Board member - West Moreton Hospital and Health Service Board member - Darling Downs & West Moreton PHN Group Executive, Diabetes Australia. 	None to declare	n/a no significant conflicts of interest identified
A/Prof. Peter Malouf	Adj Associate Professor, James Cook University	None to declare	n/a no significant conflicts of interest identified
Mr. Francis (Bill) Hogan	Director Pamanyungan Elders Indigenous Corporation	None to declare	n/a no significant conflicts of interest identified
A/Prof. Peter Heathcote	<ul style="list-style-type: none"> Board Member Prostate Cancer Foundation Australia. Fellow, Urological Society of Australia and New Zealand. Medicolegal private practice 	None to declare	n/a no significant conflicts of interest identified
Prof. Jeffrey Dunn AO	<ul style="list-style-type: none"> Chief of Mission & Head of Research, Prostate Cancer Foundation of Australia 	None to declare	n/a no significant conflicts of interest identified

Administrative Report

Name	Relevant discipline	Declaration of interest	Conflict management
	<ul style="list-style-type: none"> Professor UniSQ Deputy Chair West Moreton HHS 		
A/Prof. David Smith	<ul style="list-style-type: none"> Interim Deputy Director, Prostate Cancer Stream Lead, The Daffodil Centre, Cancer Council NSW and the University of Sydney Chair of the Prostate Cancer Outcomes Registry, Australia and New Zealand, Advisory Committee Member of the Prostate Cancer Outcomes Registry, Australia and New Zealand, Governance Committee Member of the Cancer Council Australia Cancer Screening and Immunisation Committee 	None to declare	n/a no significant conflicts of interest identified

Men of African Descent

Name	Relevant discipline	Declaration of interest	Conflict management
Prof. Vanessa Hayes	<ul style="list-style-type: none"> Petre Chair of Prostate Cancer Research, Director DoD HEOIC Prostate Cancer Precision Health Africa1K Consortium, Ancestry & Health Genomics Lab, Charles Perkins Centre School of Medical Sciences, Faculty of Medicine & Health, University of Sydney, Australia Manchester Cancer Research Centre, University of Manchester, Manchester, UK School of Health Systems & Public Health, University of Pretoria, South Africa 	Hayes is a Member of the Global Active Surveillance Movement Committee.	n/a no significant conflicts of interest identified
Prof. Jeffrey Dunn AO	<ul style="list-style-type: none"> Chief of Mission & Head of Research, Prostate Cancer Foundation of Australia Professor UniSQ Deputy Chair West Moreton HHS 	None to declare	n/a no significant conflicts of interest identified

Administrative Report

Name	Relevant discipline	Declaration of interest	Conflict management
A/Prof. David Smith	<ul style="list-style-type: none"> Interim Deputy Director, Prostate Cancer Stream Lead, The Daffodil Centre, Cancer Council NSW and the University of Sydney Chair of the Prostate Cancer Outcomes Registry, Australia and New Zealand, Advisory Committee Member of the Prostate Cancer Outcomes Registry, Australia and New Zealand, Governance Committee Member of the Cancer Council Australia Cancer Screening and Immunisation Committee 	None to declare	n/a no significant conflicts of interest identified
A/Prof. Peter Heathcote	<ul style="list-style-type: none"> Board Member Prostate Cancer Foundation Australia. Fellow, Urological Society of Australia and New Zealand. Medicolegal private practice 	None to declare	n/a no significant conflicts of interest identified
Mr. Michael Adu Adjei	Lecturer, Australian Catholic University	None to declare	n/a no significant conflicts of interest identified
A/Prof. Chris Ifediora	Griffith University School of Medicine and Dentistry, Gold Coast, Australia	None to declare	n/a no significant conflicts of interest identified

EXPERT ADVISORY PANEL (EAP)

Name	Relevant discipline	Declaration of interest	Conflict management
A/Prof. Peter Heathcote	<ul style="list-style-type: none"> Board Member Prostate Cancer Foundation Australia. Fellow, Urological Society of Australia and New Zealand. Medicolegal private practice 	None to declare	n/a no significant conflicts of interest identified
Prof. Mark Frydenberg	<ul style="list-style-type: none"> Royal Australasian College of Surgeons Council member Urological Society of Australia and New Zealand Director Avant Mutual Director Peninsula Health Director Monash University Professor 	None to declare	n/a no significant conflicts of interest identified
A/Prof. Jill Margo	<ul style="list-style-type: none"> University of NSW, Clinical Medicine. 	None to declare	n/a no significant conflicts of interest identified

Administrative Report

Name	Relevant discipline	Declaration of interest	Conflict management
	<ul style="list-style-type: none"> Health Editor of The Australian Financial Review during this project, now retired. 		
A/Prof. Nicole Heneka	Associate Professor (Prostate Cancer Partnerships) Centre for Health Research, University of Southern Queensland	None to declare	n/a no significant conflicts of interest identified
Ms. Anne Savage	CEO Prostate Cancer Foundation of Australia	None to declare	n/a no significant conflicts of interest identified
Mr. Mark Nevin	<ul style="list-style-type: none"> Cancer Council Australia CEO Standards Australia's IT-014-20 Telehealth and Virtual Care Committee, representing Australasian Institute of Digital Health (AIDH) Other volunteering as expert advisor on working groups for AIDH on digital health, AI and workforce upskilling. 	None to declare	n/a no significant conflicts of interest identified
Mr. Alan Barlee	<ul style="list-style-type: none"> Steering committee member - Geelong Prostate Support Group and of High Risk & Advanced Prostate Cancer Support Group Australia, both affiliated with PCFA Consumer member of Victorian Cancer Biobank Strategy Advisory Committee Consumer / AI member of various prostate cancer research teams based at various hospitals and universities Member of various prostate cancer 	None to declare	n/a no significant conflicts of interest identified
Mr. Derek Lightfoot	<ul style="list-style-type: none"> Chairman of Capricorn Enterprise Director of The Capricornian Limited. 	None to declare	n/a no significant conflicts of interest identified
Mr. Andrei Norris	<ul style="list-style-type: none"> Employee Department of Premier and Cabinet, Hobart Consumer advocate for PCFA Movember Ambassador Steering Committee member, Prostate Cancer Outcomes Register, Tasmania Committee member, Rose Bay High School Association, Hobart 	None to declare	n/a no significant conflicts of interest identified

Administrative Report

Name	Relevant discipline	Declaration of interest	Conflict management
Mr. John Williams	Ambassador for PCFA	None to declare	n/a no significant conflicts of interest identified
Mr. Andrew Blackwell	Leader of a Prostate Cancer Support Group	Having Prostate Cancer Leader of a Prostate Cancer Support Group	n/a no significant conflicts of interest identified
Mr. Gregory McRoberts	President PCSG-ACT Region	None to declare	n/a no significant conflicts of interest identified
Dr. Gary Morrison PhD	<ul style="list-style-type: none"> Consumer Representative Prostate Cancer Foundation Australia St Vincent's Hospital Men's Health Self Employed Health Consultant Advisor & Health Recruitment 	None to declare	n/a no significant conflicts of interest identified
Mr. Francis (Bill) Hogan	Director Pamanyungan Elders Indigenous Corporation	None to declare	n/a no significant conflicts of interest identified
Mr. Michael Adu Adjei	Lecturer, Australian Catholic University	None to declare	n/a no significant conflicts of interest identified
A/Prof. Peter Malouf	Adj Associate Professor, James Cook University	None to declare	n/a no significant conflicts of interest identified
Prof. Vanessa Hayes	<ul style="list-style-type: none"> Petre Chair of Prostate Cancer Research, Director DoD HEOIC Prostate Cancer Precision Health Africa1K Consortium, Ancestry & Health Genomics Lab, Charles Perkins Centre School of Medical Sciences, Faculty of Medicine & Health, University of Sydney, Australia Manchester Cancer Research Centre, University of Manchester, Manchester, UK School of Health Systems & Public Health, University of Pretoria, South Africa 	Hayes is a Member of the Global Active Surveillance Movember Committee.	n/a no significant conflicts of interest identified
A/Prof. Chris Ifediora	Griffith University School of Medicine and Dentistry, Gold Coast, Australia	None to declare	n/a no significant conflicts of interest identified
A/Prof. Michael O'Callaghan	Current organisation <ul style="list-style-type: none"> Flinders Medical Centre Affiliations	None to declare	n/a no significant conflicts of interest identified

Administrative Report

Name	Relevant discipline	Declaration of interest	Conflict management
	<ul style="list-style-type: none"> The University of Adelaide, Flinders University. 		
Prof. Peter Baade	<ul style="list-style-type: none"> Cancer Council Queensland Queensland University of Technology (Adjunct) University of Queensland (honorary) 	None to declare	n/a no significant conflicts of interest identified
A/Prof. Michael Caruana	Mathematical Modelling Stream lead, The Daffodil Centre, The University of Sydney - a joint venture with Cancer Council NSW, Sydney, Australia	Michael Caruana is an investigator on an investigator-initiated trial of cytology and primary HPV screening in Australia (COMPASS) (ACTRN12613001207707 and NCT02328872), which is conducted and funded by the Australian Centre for the Prevention of Cervical Cancer, a government-funded health promotion charity. The Australian Centre for the Prevention of Cervical Cancer has received equipment and a funding contribution for the COMPASS trial from Roche Molecular Systems and operational support from the Australian Government.	n/a no significant conflicts of interest identified
Dr. Brett Montgomery	<ul style="list-style-type: none"> Senior Lecturer, University of Western Australia General Practitioner, East Fremantle Medical Centre 	None to declare	n/a no significant conflicts of interest identified
Prof. Simon Willcock	General Practitioner - no employment affiliation	None to declare	n/a no significant conflicts of interest identified
Dr. Tim Tse	General Practitioner, Northern Health	None to declare	n/a no significant conflicts of interest identified
Dr. Jane Crowe	Australian Prostate Centre, Prostate Cancer GP.	None to declare	n/a no significant conflicts of interest identified
Dr. Antony Bayliss	<ul style="list-style-type: none"> Colleges Crossing Family Practice – Owner 	Membership of the above. The RACGP will likely make a	n/a no significant conflicts of interest identified

Administrative Report

Name	Relevant discipline	Declaration of interest	Conflict management
	<ul style="list-style-type: none"> Darling Downs and West Moreton PHN - Director and Chair PHN Co-operative – Chair RACGP Queensland Faculty - Council Member RACGP Expert Committee - Funding and Health System Reform - Member 	submission in response to this review.	
Dr. David Vu	Specialist General Practitioner - Maffra Medical Centre, Headspace Morwell	None to declare	n/a no significant conflicts of interest identified
Dr. Robert Arthur Proudfoot	<ul style="list-style-type: none"> Practice owner of Tamar Street Skin Cancer Clinic Doctor at BNMAC AMS Casino Fellow RACGP 	None to declare	n/a no significant conflicts of interest identified
Prof. Ewen McPhee	<ul style="list-style-type: none"> Practice Principal Emerald Medical group. Medical Advisor to the QH Office of Rural and Remote Health. Assistant Director of Medical Services Emerald Hospital. Adjunct Professor - James Cook University Central Queensland University Department of Rural Health. Non-executive Director - Rural Health Group (Charity) delivering mental health and management services to rural areas in Central Queensland. Non-executive Director to Bidgerdii Community Health Service, and aboriginal medical service. 	None to declare	n/a no significant conflicts of interest identified
Dr. Robert Birks	General Practitioner, Moe Victoria	None to declare	n/a no significant conflicts of interest identified
Prof. Declan Murphy	Director of GU Oncology, Peter MacCallum Cancer Centre	I have received reimbursement for speaker duties and/or advisory board activities from the following companies: Astellas, Bayer, Ipsen, Johnson & Johnson, Novartis, Cipla, Mundipharma, and Device Technologies	n/a no significant conflicts of interest identified

Administrative Report

Name	Relevant discipline	Declaration of interest	Conflict management
Prof. Michael Hofman	Peter MacCallum Cancer Centre	<p>MSH acknowledges support from the Prostate Cancer Foundation (PCF), a National Health, a Medical Research Council (NHMRC) Investigator Grant and Peter MacCallum Foundation.</p> <p>Unrelated to this activity, MSH acknowledges research support and/or advisory board consulting fees to Peter MacCallum Cancer Centre from AdvanCell, ANSTO, Bayer, Isotopia, Novartis and MIM. Consulting fees (personal) for lectures or advisory boards from Janssen, MSD and Sanofi in the last two years. Equity (personal) from AdvanCell.</p>	n/a no significant conflicts of interest identified
Dr. Matthew Bastian Jordan	<ul style="list-style-type: none"> • Radiologist, QLD Xray, Brisbane • Senior Lecturer, University of QLD, • Adjunct Professor, western university, Ontario, Canada. 	None to declare	n/a no significant conflicts of interest identified
Prof. Eric Chung	<ul style="list-style-type: none"> • Urological Society of Australia and New Zealand (USANZ) Chair of the Male Lower Urinary Tract section and Past Chair of the Andrology Section • International Society of Sexual Medicine, President-elect • AndroUrology Centre for Male Sexual, Urinary and Reproductive Excellence - Clinical Director • University of Queensland - Professor of Surgery • Princess Alexandra Hospital - Senior VMO Urologist 	None to declare	n/a no significant conflicts of interest identified
A/Prof. Darren Katz	<ul style="list-style-type: none"> • Men's Health Melbourne, Victoria, Australia • Department of Surgery, Western Precinct, University of Melbourne, Victoria, Australia 	None to declare	n/a no significant conflicts of interest identified

Administrative Report

Name	Relevant discipline	Declaration of interest	Conflict management
	<ul style="list-style-type: none"> Department of Urology, Western Health, Victoria, Australia 		
Prof. Martin Stockler	<ul style="list-style-type: none"> Oncology Director, NHMRC Clinical Trials Centre, University of Sydney Professor of Oncology and Clinical Epidemiology, University of Sydney Medical Oncologist, Concord Cancer Centre and Chris O'Brien Lifehouse RPA 	None to declare	n/a no significant conflicts of interest identified
Prof. Ian Davis	<p>Employers:</p> <ul style="list-style-type: none"> Monash University (Professor of Medicine and Head, Eastern Health Clinical School) Eastern Health (Professor of Medicine; medical oncologist) <p>Unremunerated:</p> <ul style="list-style-type: none"> Director and chair of ANZUP Cancer Trials Group, a not-for-profit company and registered charity. 	None to declare	n/a no significant conflicts of interest identified
Ms. Francesca Rogers	<ul style="list-style-type: none"> Edith Cowan University - Adjunct Lecturer Thyer Urology - Nurse Practitioner Men's Health Collective - Nurse Practitioner PCFA Affiliated PCSN - Hollywood Private Hospital EMRI - Advisory Board Member APCC - Committee Member 	None to declare	n/a no significant conflicts of interest identified
Mr. Bernard Riley	<ul style="list-style-type: none"> Prostate Cancer Foundation of Australia, Head of Telenursing and Supportive Care Programs Member Australia NZ Urological Nurse Society (ANZUNS) Member- Cancer Nurses Society Australia. 	None to declare	n/a no significant conflicts of interest identified
Mr. Russell Briggs	General Manager Nursing Program, Prostate Cancer Foundation of Australia	Employee of Prostate Cancer Foundation of Australia; Member of Board of Director's - Australian and New Zealand Urological Nurses Society (ANZUNS)	n/a no significant conflicts of interest identified

Administrative Report

Name	Relevant discipline	Declaration of interest	Conflict management
Dr. Ken Sikaris	Director, Chemical Pathology Dorevitch Pathology (Healius subsidiary)	None to declare	n/a no significant conflicts of interest identified
Dr. Grahame Caldwell	Pathologist in clinical chemistry and endocrinology, Douglass Hanly Moir Pathology	Douglass Hanly Moir Pathology is an ASX publicly listed company. Some shares are held in this company via the following: - Testamentary Family Trust - Self-Managed Superannuation Fund	n/a no significant conflicts of interest identified
Dr. Kerry De Voss	PCFA PSA Advisory Committee	None to declare	n/a no significant conflicts of interest identified
Dr. Que Thanh Lam	<ul style="list-style-type: none"> Head of Clinical Biochemistry Alfred Pathology Service Alfred Health, Melbourne Victoria 	None to declare	n/a no significant conflicts of interest identified
Prof. Kirsten McCaffery	<ul style="list-style-type: none"> University of Sydney Director of the Sydney Health Literacy Lab Wiser Healthcare 	Kirsten McCaffery is a co-director of Health Literacy Solutions PTY Ltd. She takes no personal income from Health Literacy Solutions PTY Ltd or the Health Literacy Editor.	n/a no significant conflicts of interest identified
Prof. Suzanne Chambers AO	<ul style="list-style-type: none"> Executive Dean Australian Catholic University Health Psychologist, Brisbane Urology Clinic 	None to declare	n/a no significant conflicts of interest identified
Prof. Paul Glasziou	Emeritus Professor, Bond University	None to declare	n/a no significant conflicts of interest identified
A/Prof. David Pryor	<ul style="list-style-type: none"> Director of Radiation Oncology, Princess Alexandra Hospital, Brisbane, QLD Visiting medical officer, ICON Cancer Care Greenslopes, Brisbane, QLD Adjunct Associate Professor, QUT, Brisbane, QLD PCOR-ANZ QLD steering committee TROG Cancer Research Genitourinary Working Group 	None to declare	n/a no significant conflicts of interest identified

Administrative Report

Name	Relevant discipline	Declaration of interest	Conflict management
Prof. Jeremy Millar	<ul style="list-style-type: none"> Radiation Oncologist, Alfred Health. Chair of the Board, Cancer Council of Victoria. Adjunct Professor, Monash University. Adjunct Professor, RMIT University. Council member, Faculty of Radiation Oncology, Royal Australian and New Zealand College of Radiology (RANZCR) (until end of 2024). Principal Clinical Advisor, Australian and New Zealand Prostate Cancer Outcomes Registry (PCOR-ANZ). Deputy Editor (Radiation Oncology), Journal of Medical Imaging and Radiation Oncology. 	None to declare	n/a no significant conflicts of interest identified
Prof. Scott Williams	<ul style="list-style-type: none"> Radiation Oncologist, Peter MacCallum Cancer Centre, Melbourne Professor, Sir Peter MacCallum Department of Oncology, University of Melbourne 	None to declare	n/a no significant conflicts of interest identified
Prof. Robert Newton	<ul style="list-style-type: none"> Professor, Edith Cowan University Honorary Professor, University of Queensland 	None to declare	n/a no significant conflicts of interest identified
Prof. Haitham Tuffaha	<ul style="list-style-type: none"> The University of Queensland, Faculty of Business, Economics, and Law Lead, Health Effective and Efficient Healthcare 	None to declare	n/a no significant conflicts of interest identified
Prof. Manish Patel	<ul style="list-style-type: none"> Professor of Urological Oncology, Specialty of Surgery, The University of Sydney Uro-oncologist, Urology Department, Westmead Hospital 	None to declare	n/a no significant conflicts of interest identified
A/Prof. Jeremy Grummet	<ul style="list-style-type: none"> Director of Urology, Alfred Health Department of surgery, Monash University 	Practising academic urologist	n/a no significant conflicts of interest identified
A/Prof. John Yaxley	<ul style="list-style-type: none"> Wesley Urology Clinic Royal Brisbane & Women's Hospital 	None to declare	n/a no significant conflicts of interest identified

Administrative Report

Name	Relevant discipline	Declaration of interest	Conflict management
	<ul style="list-style-type: none"> Department of Medicine University of Queensland 		
Prof. Nathan Lawrentschuk	<ul style="list-style-type: none"> USANZ AUA EAU BJU international Royal Melbourne Hospital Peter Mac Epworth Hospital 1) Research Trial PI into Active Surveillance- Investigator lead, non0-industry funded 2) Proctor for Focal Therapy (Getz Australia) and Robotic Surgery (Device Technologies) 	1) Research Trial PI into Active Surveillance- Investigator lead, non-industry funded 2) Proctor for Focal Therapy (Getz Australia) and Robotic Surgery (Device Technologies)	n/a no significant conflicts of interest identified
Dr. Melvyn Kuan	Sir Charles Gairdner Hospital (Western Australia)	None to declare	n/a no significant conflicts of interest identified
A/Prof. Weranja Ranasinghe	<ul style="list-style-type: none"> Consultant Urologist and Clinical Lead Genitourinary Oncology Surgery at Monash Health Consultant Urologist Austin Health Lead, Special Genitourinary Oncology Advisory Group Urologic Society of Australia and New Zealand (USANZ) Deputy Academic Lead, Cabrini Research Representative, RACS Victorian State Committee 	None to declare	n/a no significant conflicts of interest identified

EXPERT ADVISORY PANEL – WORKING GROUPS

Active Surveillance

Name	Relevant discipline	Declaration of interest	Conflict management
Prof. Nathan Lawrentschuk	<ul style="list-style-type: none"> USANZ AUA EAU BJU international Royal Melbourne Hospital Peter Mac Epworth Hospital: Research Trial PI into Active Surveillance- Investigator lead, non0-industry funded Epworth Hospital: Proctor for Focal Therapy (Getz Australia) and Robotic Surgery (Device Technologies) 	1) Research Trial PI into Active Surveillance- Investigator lead, non-industry funded 2) Proctor for Focal Therapy (Getz Australia) and Robotic Surgery (Device Technologies)	n/a no significant conflicts of interest identified
A/Prof. David Pryor	<ul style="list-style-type: none"> Director of Radiation Oncology, Princess Alexandra Hospital, Brisbane, QLD Visiting medical officer, ICON Cancer Care Greenslopes, Brisbane, QLD Adjunct Associate Professor, QUT, Brisbane, QLD PCOR-ANZ QLD steering committee TROG Cancer Research Genitourinary Working Group 	None to declare	n/a no significant conflicts of interest identified
Prof. Manish Patel	<ul style="list-style-type: none"> Professor of Urological Oncology, Specialty of Surgery, The University of Sydney Uro-oncologist, Urology Department, Westmead Hospital 	None to declare	n/a no significant conflicts of interest identified
Prof. Kirsten McCaffery	<ul style="list-style-type: none"> University of Sydney Director of the Sydney Health Literacy Lab Wiser Healthcare 	Kirsten McCaffery is a co-director of Health Literacy Solutions PTY Ltd. She takes no personal income from Health Literacy Solutions PTY Ltd or the Health Literacy Editor.	n/a no significant conflicts of interest identified
Dr. Antony Bayliss	<ul style="list-style-type: none"> Colleges Crossing Family Practice – Owner Darling Downs and West Moreton PHN - Director and Chair PHN Co-operative – Chair 	Membership of the above. The RACGP will likely make a submission in response to this review.	n/a no significant conflicts of interest identified

Administrative Report

Name	Relevant discipline	Declaration of interest	Conflict management
	<ul style="list-style-type: none"> RACGP Queensland Faculty - Council Member RACGP Expert Committee - Funding and Health System Reform - Member 		
Prof. Suzanne Chambers AO	<ul style="list-style-type: none"> Executive Dean Australian Catholic University Health Psychologist, Brisbane Urology Clinic 	None to declare	n/a no significant conflicts of interest identified
Mr. Russell Briggs	General Manager Nursing Program, Prostate Cancer Foundation of Australia	Employee of Prostate Cancer Foundation of Australia; Member of Board of Director's - Australian and New Zealand Urological Nurses Society (ANZUNS)	n/a no significant conflicts of interest identified
Mr. Andrew Blackwell	Leader of a Prostate Cancer Support Group	Having Prostate Cancer Leader of a Prostate Cancer Support Group	n/a no significant conflicts of interest identified
Dr. Robert Arthur Proudfoot	<ul style="list-style-type: none"> Practice owner of Tamar Street Skin Cancer Clinic Doctor at BNMAC AMS Casino Fellow RACGP 	None to declare	n/a no significant conflicts of interest identified

mpMRI

Name	Relevant discipline	Declaration of interest	Conflict management
A/Prof. Jeremy Grummet	<ul style="list-style-type: none"> Director of Urology, Alfred Health Department of surgery, Monash University 	Practising academic urologist	n/a no significant conflicts of interest identified
Mr. Derek Lightfoot	<ul style="list-style-type: none"> Chairman of Capricorn Enterprise Director of The Capricornian Limited. 	None to declare	n/a no significant conflicts of interest identified
Prof. Michael Hofman	Peter MacCallum Cancer Centre	MSH acknowledges support from the Prostate Cancer Foundation (PCF), a National Health, a Medical Research Council (NHMRC) Investigator Grant and Peter MacCallum Foundation.	n/a no significant conflicts of interest identified

Administrative Report

Name	Relevant discipline	Declaration of interest	Conflict management
		Unrelated to this activity, MSH acknowledges research support and/or advisory board consulting fees to Peter MacCallum Cancer Centre from AdvanCell, ANSTO, Bayer, Isotopia, Novartis and MIM. Consulting fees (personal) for lectures or advisory boards from Janssen, MSD and Sanofi in the last two years. Equity (personal) from AdvanCell.	
Dr. Matthew Bastian Jordan	<ul style="list-style-type: none"> Radiologist, QLD Xray, Brisbane Senior Lecturer, University of QLD, Adjunct Professor, western university, Ontario, Canada. 	None to declare	n/a no significant conflicts of interest identified

PSA

Name	Relevant discipline	Declaration of interest	Conflict management
Dr. Jane Crowe	Australian Prostate Centre, Prostate Cancer GP.	None to declare	n/a no significant conflicts of interest identified
Prof. Declan Murphy	Director of GU Oncology, Peter MacCallum Cancer Centre	I have received reimbursement for speaker duties and/or advisory board activities from the following companies: Astellas, Bayer, Ipsen, Johnson & Johnson, Novartis, Cipla, Mundipharma, and Device Technologies	n/a no significant conflicts of interest identified
Mr. Alan Barlee	<ul style="list-style-type: none"> Steering committee member - Geelong Prostate Support Group and of High Risk & Advanced Prostate Cancer Support Group Australia, both affiliated with PCFA Consumer member of Victorian Cancer Biobank Strategy Advisory Committee 	None to declare	n/a no significant conflicts of interest identified

Administrative Report

Name	Relevant discipline	Declaration of interest	Conflict management
	<ul style="list-style-type: none"> Consumer / AI member of various prostate cancer research teams based at various hospitals and universities Member of various prostate cancer 		
A/Prof. Michael O'Callaghan	Current organisation <ul style="list-style-type: none"> Flinders Medical Centre Affiliations <ul style="list-style-type: none"> The University of Adelaide, Flinders University. 	None to declare	n/a no significant conflicts of interest identified
Dr. Brett Montgomery	<ul style="list-style-type: none"> Senior Lecturer, University of Western Australia General Practitioner, East Fremantle Medical Centre 	None to declare	n/a no significant conflicts of interest identified
A/Prof. John Yaxley	<ul style="list-style-type: none"> Wesley Urology Clinic Royal Brisbane & Women's Hospital Department of Medicine University of Queensland 	None to declare	n/a no significant conflicts of interest identified
Dr. Ken Sikaris	Director, Chemical Pathology Dorevitch Pathology (Healius subsidiary)	None to declare	n/a no significant conflicts of interest identified
Dr. Que Thanh Lam	<ul style="list-style-type: none"> Head of Clinical Biochemistry Alfred Pathology Service Alfred Health, Melbourne Victoria 	None to declare	n/a no significant conflicts of interest identified
Dr. David Vu	Specialist General Practitioner - Maffra Medical Centre, Headspace Morwell	None to declare	n/a no significant conflicts of interest identified
Prof. Jeremy Millar	<ul style="list-style-type: none"> Radiation Oncologist, Alfred Health. Chair of the Board, Cancer Council of Victoria. Adjunct Professor, Monash University. Adjunct Professor, RMIT University. Council member, Faculty of Radiation Oncology, Royal Australian and New Zealand College of Radiology (RANZCR) (until end of 2024). Principal Clinical Advisor, Australian and New Zealand Prostate Cancer Outcomes Registry (PCOR-ANZ). Deputy Editor (Radiation Oncology), Journal of Medical 	None to declare	n/a no significant conflicts of interest identified

Administrative Report

Name	Relevant discipline	Declaration of interest	Conflict management
	Imaging and Radiation Oncology.		
Dr. Tim Tse	General Practitioner, Northern Health	None to declare	n/a no significant conflicts of interest identified
Dr. Grahame Caldwell	Pathologist in clinical chemistry and endocrinology, Douglass Hanly Moir Pathology	Douglass Hanly Moir Pathology is an ASX publicly listed company. Some shares are held in this company via the following: - Testamentary Family Trust - Self-Managed Superannuation Fund	n/a no significant conflicts of interest identified
Dr. Kerry De Voss	PCFA PSA Advisory Committee	None to declare	n/a no significant conflicts of interest identified
Mr. Andrei Norris	<ul style="list-style-type: none"> Employee Department of Premier and Cabinet, Hobart Consumer advocate for PCFA Movember Ambassador Steering Committee member, Prostate Cancer Outcomes Register, Tasmania Committee member, Rose Bay High School Association, Hobart 	None to declare	n/a no significant conflicts of interest identified
A/Prof. Weranja Ranasinghe	<ul style="list-style-type: none"> Consultant Urologist and Clinical Lead Genitourinary Oncology Surgery at Monash Health Consultant Urologist Austin Health Lead, Special Genitourinary Oncology Advisory Group Urologic Society of Australia and New Zealand (USANZ) Deputy Academic Lead, Cabrini Research Representative, RACS Victorian State Committee 	None to declare	n/a no significant conflicts of interest identified

Prostate Biopsy

Name	Relevant discipline	Declaration of interest	Conflict management
Dr. Melvyn Kuan	Sir Charles Gairdner Hospital (Western Australia)	None to declare	n/a no significant conflicts of interest identified

Administrative Report

Name	Relevant discipline	Declaration of interest	Conflict management
Prof. Martin Stockler	<ul style="list-style-type: none"> Oncology Director, NHMRC Clinical Trials Centre, University of Sydney Professor of Oncology and Clinical Epidemiology, University of Sydney Medical Oncologist, Concord Cancer Centre and Chris O'Brien Lifehouse RPA 	None to declare	n/a no significant conflicts of interest identified
Prof. Scott Williams	<ul style="list-style-type: none"> Radiation Oncologist, Peter MacCallum Cancer Centre, Melbourne Professor, Sir Peter MacCallum Department of Oncology, University of Melbourne 	None to declare	n/a no significant conflicts of interest identified
A/Prof. Jeremy Grummet	<ul style="list-style-type: none"> Director of Urology, Alfred Health Department of surgery, Monash University 	Practising academic urologist	n/a no significant conflicts of interest identified
Dr. Gary Morrison PhD	<ul style="list-style-type: none"> Consumer Representative Prostate Cancer Foundation Australia St Vincent's Hospital Men's Health Self Employed Health Consultant Advisor & Health Recruitment 	None to declare	n/a no significant conflicts of interest identified

Risk Factors

Name	Relevant discipline	Declaration of interest	Conflict management
A/Prof. Michael O'Callaghan	Current organisation <ul style="list-style-type: none"> Flinders Medical Centre Affiliations <ul style="list-style-type: none"> The University of Adelaide, Flinders University. 	None to declare	n/a no significant conflicts of interest identified
Prof. Peter Baade	<ul style="list-style-type: none"> Cancer Council Queensland Queensland University of Technology (Adjunct) University of Queensland (honorary) 	None to declare	n/a no significant conflicts of interest identified
Mr. Alan Barlee	<ul style="list-style-type: none"> Steering committee member - Geelong Prostate Support Group and of High Risk & Advanced Prostate Cancer Support Group Australia, both affiliated with PCFA 	None to declare	n/a no significant conflicts of interest identified

Administrative Report

Name	Relevant discipline	Declaration of interest	Conflict management
	<ul style="list-style-type: none"> Consumer member of Victorian Cancer Biobank Strategy Advisory Committee Consumer / AI member of various prostate cancer research teams based at various hospitals and universities Member of various prostate cancer 		
A/Prof. Jill Margo	<ul style="list-style-type: none"> University of NSW, Clinical Medicine. Health Editor of The Australian Financial Review during this project, now retired. 	None to declare	n/a no significant conflicts of interest identified
Prof. Jeremy Millar	<ul style="list-style-type: none"> Radiation Oncologist, Alfred Health. Chair of the Board, Cancer Council of Victoria. Adjunct Professor, Monash University. Adjunct Professor, RMIT University. Council member, Faculty of Radiation Oncology, Royal Australian and New Zealand College of Radiology (RANZCR) (until end of 2024). Principal Clinical Advisor, Australian and New Zealand Prostate Cancer Outcomes Registry (PCOR-ANZ). Deputy Editor (Radiation Oncology), Journal of Medical Imaging and Radiation Oncology. 	None to declare	n/a no significant conflicts of interest identified
Prof. Paul Glasziou	Emeritus Professor, Bond University	None to declare	n/a no significant conflicts of interest identified
Prof. Ewen McPhee	<ul style="list-style-type: none"> Practice Principal Emerald Medical group. Medical Advisor to the QH Office of Rural and Remote Health. Assistant Director of Medical Services Emerald Hospital. Adjunct Professor - James Cook University Central Queensland University Department of Rural Health. Non-executive Director - Rural Health Group (Charity) delivering mental health and 	None to declare	n/a no significant conflicts of interest identified

Administrative Report

Name	Relevant discipline	Declaration of interest	Conflict management
	management services to rural areas in Central Queensland. <ul style="list-style-type: none"> Non-executive Director to Bidgerdii Community Health Service, and aboriginal medical service. 		
Prof. Vanessa Hayes	<ul style="list-style-type: none"> Petre Chair of Prostate Cancer Research, Director DoD HEOIC Prostate Cancer Precision Health Africa1K Consortium, Ancestry & Health Genomics Lab, Charles Perkins Centre School of Medical Sciences, Faculty of Medicine & Health, University of Sydney, Australia Manchester Cancer Research Centre, University of Manchester, Manchester, UK School of Health Systems & Public Health, University of Pretoria, South Africa 	Hayes is a Member of the Global Active Surveillance Movember Committee.	n/a no significant conflicts of interest identified

Decisional Support

Name	Relevant discipline	Declaration of interest	Conflict management
A/Prof. David Pryor	<ul style="list-style-type: none"> Director of Radiation Oncology, Princess Alexandra Hospital, Brisbane, QLD Visiting medical officer, ICON Cancer Care Greenslopes, Brisbane, QLD Adjunct Associate Professor, QUT, Brisbane, QLD PCOR-ANZ QLD steering committee TROG Cancer Research Genitourinary Working Group 	None to declare	n/a no significant conflicts of interest identified
Prof. Kirsten McCaffery	<ul style="list-style-type: none"> University of Sydney Director of the Sydney Health Literacy Lab Wiser Healthcare 	Kirsten McCaffery is a co-director of Health Literacy Solutions PTY Ltd. She takes no personal income from Health Literacy Solutions PTY Ltd or the Health Literacy Editor.	n/a no significant conflicts of interest identified
Prof. Simon Willcock	General Practitioner - no employment affiliation	None to declare	n/a no significant conflicts of interest identified

Administrative Report

Name	Relevant discipline	Declaration of interest	Conflict management
Prof. Suzanne Chambers AO	<ul style="list-style-type: none"> Executive Dean Australian Catholic University Health Psychologist, Brisbane Urology Clinic 	None to declare	n/a no significant conflicts of interest identified
Prof. Manish Patel	<ul style="list-style-type: none"> Professor of Urological Oncology, Specialty of Surgery, The University of Sydney Uro-oncologist, Urology Department, Westmead Hospital 	None to declare	n/a no significant conflicts of interest identified
Mr. Derek Lightfoot	<ul style="list-style-type: none"> Chairman of Capricorn Enterprise Director of The Capricornian Limited. 	None to declare	n/a no significant conflicts of interest identified
Prof. Paul Glasziou	Emeritus Professor, Bond University	None to declare	n/a no significant conflicts of interest identified

DRE

Name	Relevant discipline	Declaration of interest	Conflict management
Prof. Eric Chung	<ul style="list-style-type: none"> Urological Society of Australia and New Zealand (USANZ) Chair of the Male Lower Urinary Tract section and Past Chair of the Andrology Section International Society of Sexual Medicine, President-elect AndroUrology Centre for Male Sexual, Urinary and Reproductive Excellence - Clinical Director University of Queensland - Professor of Surgery Princess Alexandra Hospital - Senior VMO Urologist 	None to declare	n/a no significant conflicts of interest identified
A/Prof. Darren Katz	<ul style="list-style-type: none"> Men's Health Melbourne, Victoria, Australia Department of Surgery, Western Precinct, University of Melbourne, Victoria, Australia Department of Urology, Western Health, Victoria, Australia 	None to declare	n/a no significant conflicts of interest identified
Dr. Brett Montgomery	<ul style="list-style-type: none"> Senior Lecturer, University of Western Australia General Practitioner, East Fremantle Medical Centre 	None to declare	n/a no significant conflicts of interest identified

Administrative Report

Name	Relevant discipline	Declaration of interest	Conflict management
Mr. Gregory McRoberts	President PCSG-ACT Region	None to declare	n/a no significant conflicts of interest identified
Prof. Paul Glasziou	Emeritus Professor, Bond University	None to declare	n/a no significant conflicts of interest identified

Watchful Waiting

Name	Relevant discipline	Declaration of interest	Conflict management
Prof. Ian Davis	Employers: <ul style="list-style-type: none"> Monash University (Professor of Medicine and Head, Eastern Health Clinical School) Eastern Health (Professor of Medicine; medical oncologist) Unremunerated: <ul style="list-style-type: none"> Director and chair of ANZUP Cancer Trials Group, a not-for-profit company and registered charity. 	None to declare	n/a no significant conflicts of interest identified
Ms. Francesca Rogers	<ul style="list-style-type: none"> Edith Cowan University - Adjunct Lecturer Thyer Urology - Nurse Practitioner Men's Health Collective - Nurse Practitioner PCFA Affiliated PCSN - Hollywood Private Hospital EMRI - Advisory Board Member APCC - Committee Member 	None to declare	n/a no significant conflicts of interest identified
Prof. Eric Chung	<ul style="list-style-type: none"> Urological Society of Australia and New Zealand (USANZ) Chair of the Male Lower Urinary Tract section and Past Chair of the Andrology Section International Society of Sexual Medicine, President-elect AndroUrology Centre for Male Sexual, Urinary and Reproductive Excellence - Clinical Director University of Queensland - Professor of Surgery Princess Alexandra Hospital - Senior VMO Urologist 	None to declare	n/a no significant conflicts of interest identified

Administrative Report

Name	Relevant discipline	Declaration of interest	Conflict management
Prof. Robert Newton	<ul style="list-style-type: none"> Professor, Edith Cowan University Honorary Professor, University of Queensland 	None to declare	n/a no significant conflicts of interest identified
Prof. Scott Williams	<ul style="list-style-type: none"> Radiation Oncologist, Peter MacCallum Cancer Centre, Melbourne Professor, Sir Peter MacCallum Department of Oncology, University of Melbourne 	None to declare	n/a no significant conflicts of interest identified
Mr. Russell Briggs	General Manager Nursing Program, Prostate Cancer Foundation of Australia	Employee of Prostate Cancer Foundation of Australia; Member of Board of Director's - Australian and New Zealand Urological Nurses Society (ANZUNS)	n/a no significant conflicts of interest identified
Dr. David Vu	Specialist General Practitioner - Maffra Medical Centre, Headspace Morwell	None to declare	n/a no significant conflicts of interest identified
Mr. Gregory McRoberts	President PCSG-ACT Region	None to declare	n/a no significant conflicts of interest identified

Administrative Report

Population Wide Approaches & Harm Minimisation

Name	Relevant discipline	Declaration of interest	Conflict management
Prof. Manish Patel	<ul style="list-style-type: none"> Professor of Urological Oncology, Specialty of Surgery, The University of Sydney Uro-oncologist, Urology Department, Westmead Hospital 	None to declare	n/a no significant conflicts of interest identified
A/Prof. Michael Caruana	Mathematical Modelling Stream lead, The Daffodil Centre, The University of Sydney - a joint venture with Cancer Council NSW, Sydney, Australia	Michael Caruana is an investigator on an investigator-initiated trial of cytology and primary HPV screening in Australia (COMPASS) (ACTRN12613001207707 and NCT02328872), which is conducted and funded by the Australian Centre for the Prevention of Cervical Cancer, a government-funded health promotion charity. The Australian Centre for the Prevention of Cervical Cancer has received equipment and a funding contribution for the COMPASS trial from Roche Molecular Systems and operational support from the Australian Government.	n/a no significant conflicts of interest identified
Prof. Declan Murphy	Director of GU Oncology, Peter MacCallum Cancer Centre	I have received reimbursement for speaker duties and/or advisory board activities from the following companies: Astellas, Bayer, Ipsen, Johnson & Johnson, Novartis, Cipla, Mundipharma, and Device Technologies	n/a no significant conflicts of interest identified
Dr. Tim Tse	General Practitioner, Northern Health	None to declare	n/a no significant conflicts of interest identified
A/Prof. Weranja Ranasinghe	<ul style="list-style-type: none"> Consultant Urologist and Clinical Lead Genitourinary Oncology Surgery at Monash Health 	None to declare	n/a no significant conflicts of interest identified

Administrative Report

Name	Relevant discipline	Declaration of interest	Conflict management
	<ul style="list-style-type: none"> Consultant Urologist Austin Health Lead, Special Genitourinary Oncology Advisory Group Urologic Society of Australia and New Zealand (USANZ) Deputy Academic Lead, Cabrini Research Representative, RACS Victorian State Committee 		
Mr. Bernard Riley	<ul style="list-style-type: none"> Prostate Cancer Foundation of Australia, Head of Telenursing and Supportive Care Programs Member Australia NZ Urological Nurse Society (ANZUNS) Member- Cancer Nurses Society Australia. 	None to declare	n/a no significant conflicts of interest identified
Prof. Paul Glasziou	Emeritus Professor, Bond University	None to declare	n/a no significant conflicts of interest identified
A/Prof. Jeremy Grummet	<ul style="list-style-type: none"> Director of Urology, Alfred Health Department of surgery, Monash University 	Practising academic urologist	n/a no significant conflicts of interest identified
Dr. Antony Bayliss	<ul style="list-style-type: none"> Colleges Crossing Family Practice – Owner Darling Downs and West Moreton PHN - Director and Chair PHN Co-operative – Chair RACGP Queensland Faculty - Council Member RACGP Expert Committee - Funding and Health System Reform - Member 	Membership of the above. The RACGP will likely make a submission in response to this review.	n/a no significant conflicts of interest identified
Mr. John Williams	Ambassador for PCFA	None to declare	n/a no significant conflicts of interest identified
Dr. Robert Arthur Proudfoot	<ul style="list-style-type: none"> Practice owner of Tamar Street Skin Cancer Clinic Doctor at BNMAC AMS Casino Fellow RACGP 	None to declare	n/a no significant conflicts of interest identified
Dr. Robert Birks	General Practitioner, Moe Victoria	None to declare	n/a no significant conflicts of interest identified

Administrative Report

Communications & Implementation

Name	Relevant discipline	Declaration of interest	Conflict management
Prof. Kirsten McCaffery	<ul style="list-style-type: none"> University of Sydney Director of the Sydney Health Literacy Lab Wiser Healthcare 	Kirsten McCaffery is a co-director of Health Literacy Solutions PTY Ltd. She takes no personal income from Health Literacy Solutions PTY Ltd or the Health Literacy Editor.	n/a no significant conflicts of interest identified
A/Prof. Jill Margo	<ul style="list-style-type: none"> University of NSW, Clinical Medicine. Health Editor of The Australian Financial Review during this project, now retired. 	None to declare	n/a no significant conflicts of interest identified
Prof. Suzanne Chambers AO	<ul style="list-style-type: none"> Executive Dean Australian Catholic University Health Psychologist, Brisbane Urology Clinic 	None to declare	n/a no significant conflicts of interest identified
Dr. Melvyn Kuan	Sir Charles Gairdner Hospital (Western Australia)	None to declare	n/a no significant conflicts of interest identified
Ms. Megan Varlow	<ul style="list-style-type: none"> Director Cancer Control Policy, Cancer Council Australia Member, Australian Blood Cancer Taskforce Member Governance Authority, Australian Prevention Partnership Centre 	None to declare	n/a no significant conflicts of interest identified
Ms. Anne Savage	CEO Prostate Cancer Foundation of Australia	None to declare	n/a no significant conflicts of interest identified
Mr Paul Grogan	Senior adviser, research affiliate, University of Sydney	None to declare	n/a no significant conflicts of interest identified
Prof. Ewen McPhee	<ul style="list-style-type: none"> Practice Principal Emerald Medical group. Medical Advisor to the QH Office of Rural and Remote Health. Assistant Director of Medical Services Emerald Hospital. Adjunct Professor - James Cook University Central Queensland University Department of Rural Health. Non-executive Director - Rural Health Group (Charity) delivering mental health and 	None to declare	n/a no significant conflicts of interest identified

Administrative Report

Name	Relevant discipline	Declaration of interest	Conflict management
	management services to rural areas in Central Queensland. <ul style="list-style-type: none"> Non-executive Director to Bidgerdii Community Health Service, and aboriginal medical service. 		
A/Prof. Nicole Heneka	Associate Professor (Prostate Cancer Partnerships) Centre for Health Research, University of Southern Queensland	None to declare	n/a no significant conflicts of interest identified

Socio-Economic

Name	Relevant discipline	Declaration of interest	Conflict management
A/Prof. David Smith	<ul style="list-style-type: none"> Interim Deputy Director, Prostate Cancer Stream Lead, The Daffodil Centre, Cancer Council NSW and the University of Sydney Chair of the Prostate Cancer Outcomes Registry, Australia and New Zealand, Advisory Committee Member of the Prostate Cancer Outcomes Registry, Australia and New Zealand, Governance Committee Member of the Cancer Council Australia Cancer Screening and Immunisation Committee 	None to declare	n/a no significant conflicts of interest identified
A/Prof. Peter Heathcote	<ul style="list-style-type: none"> Board Member Prostate Cancer Foundation Australia. Fellow, Urological Society of Australia and New Zealand. Medicolegal private practice 	None to declare	n/a no significant conflicts of interest identified
Mr Paul Grogan	Senior adviser, research affiliate, University of Sydney	None to declare	n/a no significant conflicts of interest identified
Ms. Anne Savage	CEO Prostate Cancer Foundation of Australia	None to declare	n/a no significant conflicts of interest identified
Dr. Robert Birks	General Practitioner, Moe Victoria	None to declare	n/a no significant conflicts of interest identified
Prof. Haitham Tuffaha	<ul style="list-style-type: none"> The University of Queensland, Faculty of Business, Economics, and Law 	None to declare	n/a no significant conflicts of interest identified

Administrative Report

Name	Relevant discipline	Declaration of interest	Conflict management
	<ul style="list-style-type: none"> Lead, Health Effective and Efficient Healthcare 		

MCID-Minimal Clinically Important Differences

Name	Relevant discipline	Declaration of interest	Conflict management
Prof. Martin Stockler	<ul style="list-style-type: none"> Oncology Director, NHMRC Clinical Trials Centre, University of Sydney Professor of Oncology and Clinical Epidemiology, University of Sydney Medical Oncologist, Concord Cancer Centre and Chris O'Brien Lifehouse RPA 	None to declare	n/a no significant conflicts of interest identified
Dr. Robert Birks	General Practitioner, Moe Victoria	None to declare	n/a no significant conflicts of interest identified
Ms. Francesca Rogers	<ul style="list-style-type: none"> Edith Cowan University - Adjunct Lecturer Thyer Urology - Nurse Practitioner Men's Health Collective - Nurse Practitioner PCFA Affiliated PCSN - Hollywood Private Hospital EMRI - Advisory Board Member APCC - Committee Member 	None to declare	n/a no significant conflicts of interest identified
Prof. Declan Murphy	Director of GU Oncology, Peter MacCallum Cancer Centre	I have received reimbursement for speaker duties and/or advisory board activities from the following companies: Astellas, Bayer, Ipsen, Johnson & Johnson, Novartis, Cipla, Mundipharma, and Device Technologies	n/a no significant conflicts of interest identified
Prof. Declan Murphy	Director of GU Oncology, Peter MacCallum Cancer Centre	I have received reimbursement for speaker duties and/or advisory board activities from the following companies: Astellas, Bayer, Ipsen, Johnson & Johnson, Novartis, Cipla,	n/a no significant conflicts of interest identified

Administrative Report

Name	Relevant discipline	Declaration of interest	Conflict management
		Mundipharma, and Device Technologies	
Mr. Alan Barlee	<ul style="list-style-type: none"> Steering committee member - Geelong Prostate Support Group and of High Risk & Advanced Prostate Cancer Support Group Australia, both affiliated with PCFA Consumer member of Victorian Cancer Biobank Strategy Advisory Committee Consumer / AI member of various prostate cancer research teams based at various hospitals and universities Member of various prostate cancer 	None to declare	n/a no significant conflicts of interest identified

EXECUTIVE COMMITTEE

Name	Relevant discipline	Declaration of interest	Conflict management
Prof. Jeffrey Dunn AO	<ul style="list-style-type: none"> Chief of Mission & Head of Research, Prostate Cancer Foundation of Australia Professor UniSQ Deputy Chair West Moreton HHS 	None to declare	n/a no significant conflicts of interest identified
Ms. Anne Savage	CEO Prostate Cancer Foundation of Australia	None to declare	n/a no significant conflicts of interest identified
A/Prof. Peter Heathcote	<ul style="list-style-type: none"> Board Member Prostate Cancer Foundation Australia. Fellow, Urological Society of Australia and New Zealand. Medicolegal private practice 	None to declare	n/a no significant conflicts of interest identified
A/Prof. David Smith	<ul style="list-style-type: none"> Interim Deputy Director, Prostate Cancer Stream Lead, The Daffodil Centre, Cancer Council NSW and the University of Sydney Chair of the Prostate Cancer Outcomes Registry, Australia and New Zealand, Advisory Committee Member of the Prostate Cancer Outcomes Registry, Australia 	None to declare	n/a no significant conflicts of interest identified

Administrative Report

Name	Relevant discipline	Declaration of interest	Conflict management
	and New Zealand, Governance Committee <ul style="list-style-type: none"> Member of the Cancer Council Australia Cancer Screening and Immunisation Committee 		
Ms. Hannah Lunnay	Governance and Research Executive, Prostate Cancer Foundation of Australia	None to declare	n/a no significant conflicts of interest identified

PAST MEMBER - EXECUTIVE COMMITTEE

Name	Relevant discipline	Declaration of interest	Conflict management
Mr Paul Grogan	Senior adviser, research affiliate, University of Sydney	None to declare	n/a no significant conflicts of interest identified

WRITING TEAM

Name	Relevant discipline	Declaration of interest	Conflict management
Prof. Jeffrey Dunn AO	<ul style="list-style-type: none"> Chief of Mission & Head of Research, Prostate Cancer Foundation of Australia Professor UniSQ Deputy Chair West Moreton HHS 	None to declare	n/a no significant conflicts of interest identified
A/Prof. Peter Heathcote	<ul style="list-style-type: none"> Board Member Prostate Cancer Foundation Australia. Fellow, Urological Society of Australia and New Zealand. Medicolegal private practice 	None to declare	n/a no significant conflicts of interest identified
A/Prof. David Smith	<ul style="list-style-type: none"> Interim Deputy Director, Prostate Cancer Stream Lead, The Daffodil Centre, Cancer Council NSW and the University of Sydney Chair of the Prostate Cancer Outcomes Registry, Australia and New Zealand, Advisory Committee Member of the Prostate Cancer Outcomes Registry, Australia and New Zealand, Governance Committee 	None to declare	n/a no significant conflicts of interest identified

Administrative Report

Name	Relevant discipline	Declaration of interest	Conflict management
	<ul style="list-style-type: none"> Member of the Cancer Council Australia Cancer Screening and Immunisation Committee 		
A/Prof. Nicole Heneka	Associate Professor (Prostate Cancer Partnerships) Centre for Health Research, University of Southern Queensland	None to declare	n/a no significant conflicts of interest identified
Dr. Jacqueline Schmitt	<ul style="list-style-type: none"> Manager, Special Projects, Prostate Cancer Foundation of Australia Adjunct Lecturer, UniSQ 	None to declare	n/a no significant conflicts of interest identified
Miss Isabelle Schaefer	<ul style="list-style-type: none"> Australian Catholic University University of Southern Queensland University of Technology Sydney 	None to declare	n/a no significant conflicts of interest identified

TECHNICAL TEAM – The Daffodil Centre

Name	Relevant discipline	Declaration of interest	Conflict management
A/Prof. David Smith	<ul style="list-style-type: none"> Interim Deputy Director, Prostate Cancer Stream Lead, The Daffodil Centre, Cancer Council NSW and the University of Sydney Chair of the Prostate Cancer Outcomes Registry, Australia and New Zealand, Advisory Committee Member of the Prostate Cancer Outcomes Registry, Australia and New Zealand, Governance Committee Member of the Cancer Council Australia Cancer Screening and Immunisation Committee 	None to declare	n/a no significant conflicts of interest identified
Prof. Michael David	<ul style="list-style-type: none"> Lead, Research Methods Stream, The Daffodil Centre E-level affiliation with the Faculty of Medicine and Health, the University of Sydney, E-level affiliation with The School of Medicine and Dentistry with Griffith University. 	None to declare	n/a no significant conflicts of interest identified
Mrs. Chelsea Carle	Systematic Review Specialist, The Daffodil Centre	None to declare	n/a no significant conflicts of interest identified

Administrative Report

Name	Relevant discipline	Declaration of interest	Conflict management
Ms. Suzanne Hughes	Program Manager Systematic Review - The Daffodil Centre	None to declare	n/a no significant conflicts of interest identified
Dr. Susan Yuill	<ul style="list-style-type: none"> Systematic Review Specialist - The Daffodil Centre. Research Fellow - The University of Sydney, School of Public Health 	None to declare	n/a no significant conflicts of interest identified
Dr. Visalini Nair Shalliker	Senior Research Fellow at the Daffodil Centre	None to declare	n/a no significant conflicts of interest identified
Dr. Karen Chiam	The Daffodil Centre, a joint venture between Cancer Council NSW and University of Sydney	None to declare	n/a no significant conflicts of interest identified
Ms Harriet Hui	Sydney School of Public Health, Faculty of Medicine and Health, University of Sydney	None to declare	n/a no significant conflicts of interest identified
Dr Pavla Vaneckova	Research Fellow; The Daffodil Centre, The University of Sydney, a joint venture with Cancer Council NSW	None to declare	n/a no significant conflicts of interest identified
Miss. Rani Chand	Research Assistant, The Daffodil Centre	None to declare	n/a no significant conflicts of interest identified

PAST MEMBERS - TECHNICAL TEAM – The Daffodil Centre

Name	Relevant discipline	Declaration of interest	Conflict management
Dr Rehana Abdus Salam	Postdoctoral Research Fellow, The Daffodil Centre, The University of Sydney, a joint venture with Cancer Council NSW, Sydney, New South Wales, Australia	None to declare	n/a no significant conflicts of interest identified
Ms. Isabel Rewis	<ul style="list-style-type: none"> Research Officer at University of Sydney Matilda Centre for Research in Mental Health and Substance Use Previously research assistant at the Daffodil Centre 	None to declare	n/a no significant conflicts of interest identified
Dr Denise Campbell	Senior Project Officer-Systematic Reviewer, Faculty of Medicine and Health, University of Sydney	None to declare	n/a no significant conflicts of interest identified

Appendix 5: Independent review responses

Dr Matthew Roberts - AGREE II Score Sheet

Dr Matthew Roberts BSc, MBBS, PhD, FRACS (Urol) is a Consultant Urologist at the Royal Brisbane and Women's Hospital, Clinician Research Fellow at Metro North Hospital and Health Service, and Group Leader and Associate Profession in the University of Queensland Centre for Clinical Research.

Domain	Item	AGREE II Rating							Comment
		Lowest			Highest				
		1	2	3	4	5	6	7	
Scope and purpose	1. The overall objective(s) of the guideline is (are) specifically described.					x			Not specifically listed. Most relevant is "Purpose" section but could be better highlighted
	2. The health question(s) covered by the guideline is (are) specifically described.							x	Specific questions to inform each section and literature review with recommendations
	3. The population (patients, public, etc.) to whom the guideline is meant to apply is specifically described.							x	Described male patients. Correctly includes variation in gender terminology, a little inconsistent use of terminology throughout guideline
Stakeholder involvement	4. The guideline development group includes individuals from all the relevant professional groups.						x		Good cross section, but details on the content expertise inconsistently provided in Administrative data table. Appendix 1 lists role in each panel/group clearly
	5. The views and preferences of the target population (patients, public, etc.) have been sought.							x	Strong consumer involvement, including multiple aspects of the population (eg. CALD, first nations)
	6. The target users of the guideline are clearly defined.							x	Very clear in the Plain English Summary and elsewhere
Rigor of development	7. Systematic methods were used to search for evidence.							x	Well described in technical report
	8. The criteria for selecting the						x		Well described in technical report. In the guidelines, reliance on RCTs is used in some sections, with retrospective evidence endorsed in

Administrative Report

Domain	Item	AGREE II Rating							Comment
		Lowest			Highest				
		1	2	3	4	5	6	7	
	evidence are clearly described.								some other sections. Likely reflective of available data, but possible that contributory non-RCT data was not considered in some sections
	9. The strengths and limitations of the body of evidence are clearly described.							x	Risk of bias/quality assessment performed and incorporated into recommendations
	10. The methods for formulating the recommendations are clearly described.					x			Documented well in Technical Report section 2.2 up until 2.2.3.9 - unsure how the Evidence to Decision tables were constructed, what discussions were had, disagreement management etc. (as outlined in User manual)
	11. The health benefits, side effects and risks have been considered in formulating the recommendations.						x		Strong focus on prostate cancer death (very reasonable). Strongly worded to this focus. Suggest further considerations of the risks/downsides (particularly anxiety, suicide etc) of abnormal tests (PSA, MRI), overdiagnosis of ISUP 1 disease +/- ISUP 2 disease in the elderly
	12. There is an explicit link between the recommendations and the supporting evidence.						x		Strong link to evidence base found with the systematic review; some notable omissions from review (eg. Kasivisvanathan et al. PRECISION trial in NEJM; Pokorny et al Eur Urol Australian study)
	13. The guideline has been externally reviewed by experts prior to its publication.							x	Currently undergoing this process, will submit detailed review
	14. A procedure for updating the guideline is provided.			x					Intention to update is outlined but procedure not provided. Included as part of implementation aspect.
Clarity of presentation	15. The recommendations are specific and unambiguous.						x		Agree, some of the content of the recommendations could be ambiguous (eg. subject to clinical assessment- this is a clinical guideline so this terminology could be more specific as to aspects in a clinical assessment that would prompt a change)
	16. The different options for management of the condition or health issue are clearly presented.							x	not really applicable but where multiple options exist (eg. biopsy vs monitoring vs imaging), these are outlined clearly
	17. Key recommendations							x	

Administrative Report

Domain	Item	AGREE II Rating							Comment
		Lowest			Highest				
		1	2	3	4	5	6	7	
	are easily identifiable.								
Applicability	18. The guideline describes facilitators and barriers to its application.						x		Good summary of these
	19. The guideline provides advice and/or tools on how the recommendations can be put into practice.						x		some applicability issues suggested but ultimately is the subject of future work, pending funding
	20. The potential resource implications of applying the recommendations have been considered.					x			Difficult to find, a figure of 42% increase in prostate cancer related costs is stated. No further expansion that I could find (ie. reduction in use of systemic treatments and associated cost savings, improvement in patient quality of life etc)
	21. The guideline presents monitoring and/ or auditing criteria.						x		Goal to monitor guideline but no specific plan provided (contingent on funding)
Editorial independence	22. The views of the funding body have not influenced the content of the guideline.					x			PCFA vision is for zero prostate cancer deaths. This could influence the heavy emphasis of the guideline on mortality (among this complex disease entity including quality of life and other issues)
	23. Competing interests of guideline development group members have been recorded and addressed.							x	very well done

Administrative Report

Overall Guideline Assessment								
Item	Lowest possible quality					Highest possible quality		Comment
	1	2	3	4	5	6	7	
1. Rate the overall quality of this guideline.						x		
2. I would recommend this guideline for use.	Yes		Yes, with modifications			No		Please provide feedback on why you would/would not recommend this guideline for use.
			x					Strong evidence base. Broad panel that constructed the guidelines with wider stakeholder engagement. Applicable to Australian health system/resources. Some over emphasis in some areas that I will provide detailed comments on for consideration of revision.

Thomas Langford-Ely – AGREE II Score Sheet

Dr Thomas Langford-Ely BSc MBBS FRACGP is a General Practitioner with eleven years of experience, and a Fellow of the Royal Australian College of General Practitioners.

Domain	Item	AGREE II Rating							Comment
		Lowest			Highest				
		1	2	3	4	5	6	7	
Scope and purpose	1. The overall objective(s) of the guideline is (are) specifically described.							x	The objectives are clearly articulated and reiterated in multiple sections
	2. The health question(s) covered by the guideline is (are) specifically described.							x	guideline provides a detailed, structured, and transparent articulation of the clinical questions it addresses
	3. The population (patients, public, etc.) to whom the guideline is meant to apply is specifically described.							x	repeatedly explained
Stakeholder involvement	4. The guideline development group includes individuals from all the relevant professional groups.							x	(Nil)
	5. The views and preferences of the target population (patients, public, etc.) have been sought.							x	clear and concise.
	6. The target users of the guideline are clearly defined.							x	(Nil)
Rigor of development	7. Systematic methods were used to search for evidence.						x		
	8. The criteria for selecting the evidence are clearly described.							x	
	9. The strengths and limitations of the body of evidence are clearly described.							x	clearly articulated, use of GRADE method throughout.

Administrative Report

Domain	Item	AGREE II Rating							Comment
		Lowest			Highest				
		1	2	3	4	5	6	7	
	10. The methods for formulating the recommendations are clearly described.						x		
	11. The health benefits, side effects and risks have been considered in formulating the recommendations.							x	thorough and complete examination and articulation of these factors.
	12. There is an explicit link between the recommendations and the supporting evidence.							x	Directly linked recommendations to their evidence base through structured summaries and GRADE assessments noted throughout.
	13. The guideline has been externally reviewed by experts prior to its publication.						x		obviously this is part of that process. further review as described. some limitation regarding process of review, explicitly outlining affiliations.
	14. A procedure for updating the guideline is provided.							x	
Clarity of presentation	15. The recommendations are specific and unambiguous.							x	
	16. The different options for management of the condition or health issue are clearly presented.							x	clear presentation and unambiguous process and algorithms
	17. Key recommendations are easily identifiable.							x	
Applicability	18. The guideline describes facilitators and barriers to its application.						x		well described and noted.
	19. The guideline provides advice and/or tools on how the recommendations can be put into practice.						x		

Administrative Report

Domain	Item	AGREE II Rating							Comment
		Lowest			Highest				
		1	2	3	4	5	6	7	
	20. The potential resource implications of applying the recommendations have been considered.					x			I have some concerns unaddressed regarding access to urologist input and pMRI in an equitably timely fashion in resource-poor primary care settings.
	21. The guideline presents monitoring and/ or auditing criteria.						x		
Editorial independence	22. The views of the funding body have not influenced the content of the guideline.							x	clearly expressed
	23. Competing interests of guideline development group members have been recorded and addressed.							x	

Overall Guideline Assessment									
Item	Lowest possible quality					Highest possible quality			
	1	2	3	4	5	6	7		
1. Rate the overall quality of this guideline.							x		
2. I would recommend this guideline for use.	Yes		Yes, with modifications			No		Please provide feedback on why you would/would not recommend this guideline for use.	
			x					Comprehensively considered and thorough. There is clear need for this guideline in clinical practice and greater clarity in this space is welcome.	